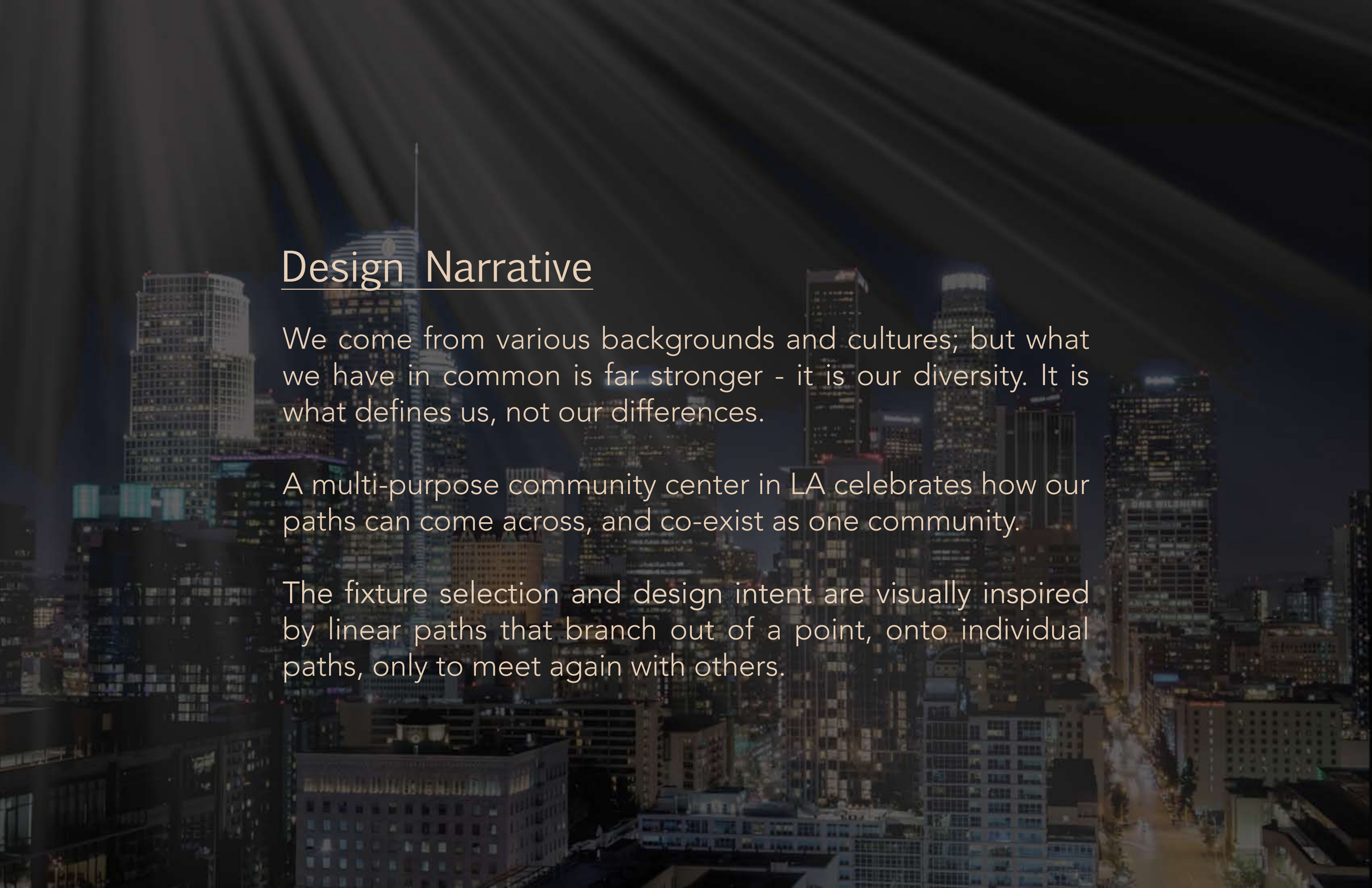


A nighttime cityscape with numerous skyscrapers and buildings illuminated. Overlaid on the image are several bright, diagonal light paths that create a sense of movement and depth. The text is centered over the image.

Light Paths

Designed & Presented by Omar Madkour

2020 Russell Cole Lighting Design Competition
Conceptual Design Entry



Design Narrative

We come from various backgrounds and cultures; but what we have in common is far stronger - it is our diversity. It is what defines us, not our differences.

A multi-purpose community center in LA celebrates how our paths can come across, and co-exist as one community.

The fixture selection and design intent are visually inspired by linear paths that branch out of a point, onto individual paths, only to meet again with others.

(1) Hallway / Wall Mount

(2) Classroom East Wall

(3) Bathroom Mirror

(4) Bathroom Pendant

(5) Cabinet

(6) Foyer / Drop Ceiling

(7) Nursery



The choice of linear fixtures throughout serves two purposes. It unifies a visual identity which corresponds to the concept of paths meeting, while complimenting the drop ceiling linear architecture which covers a large portion of the building.



(8) Downlights



(9) Pendant



(10) Sconce



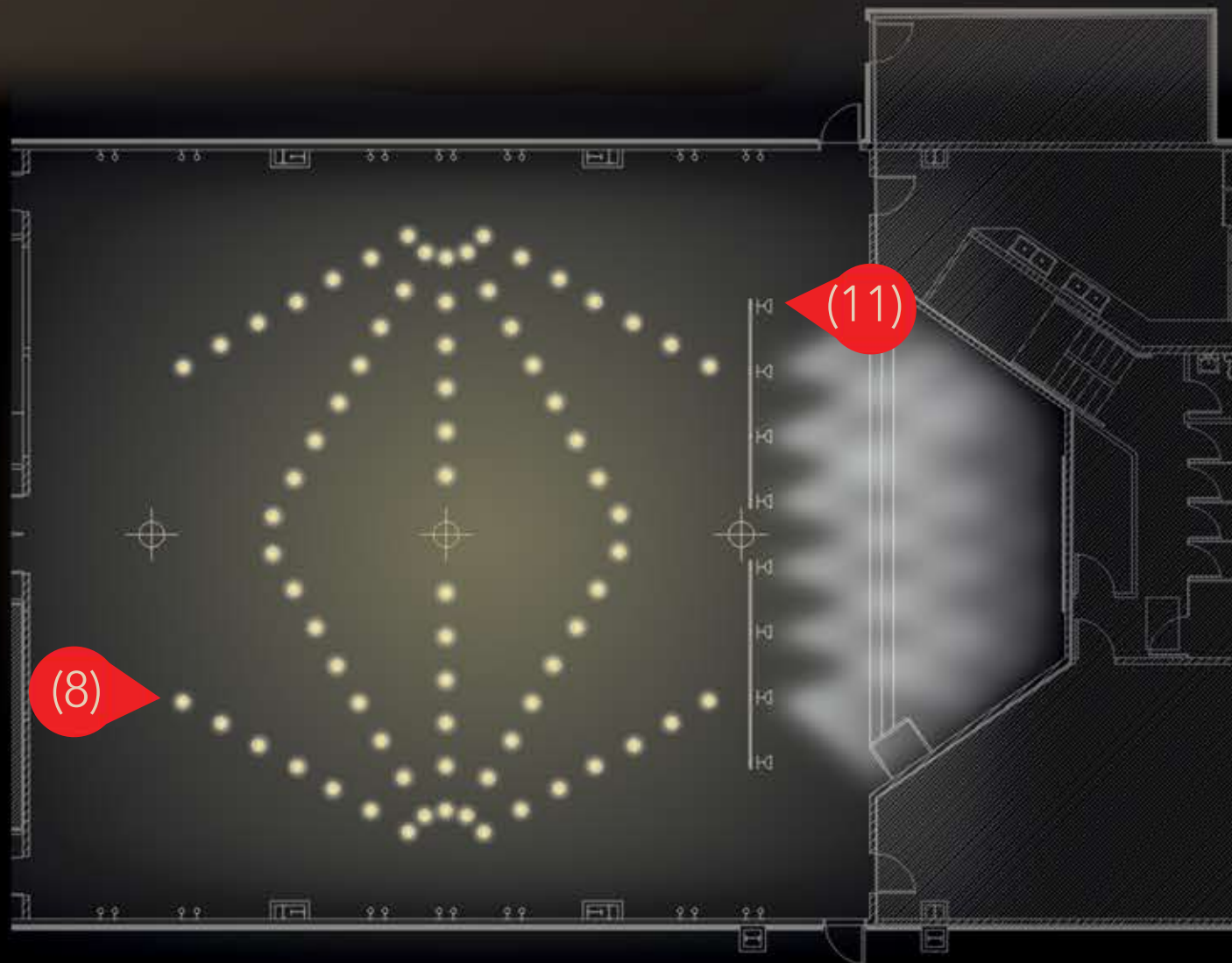
(11) Stage Lights



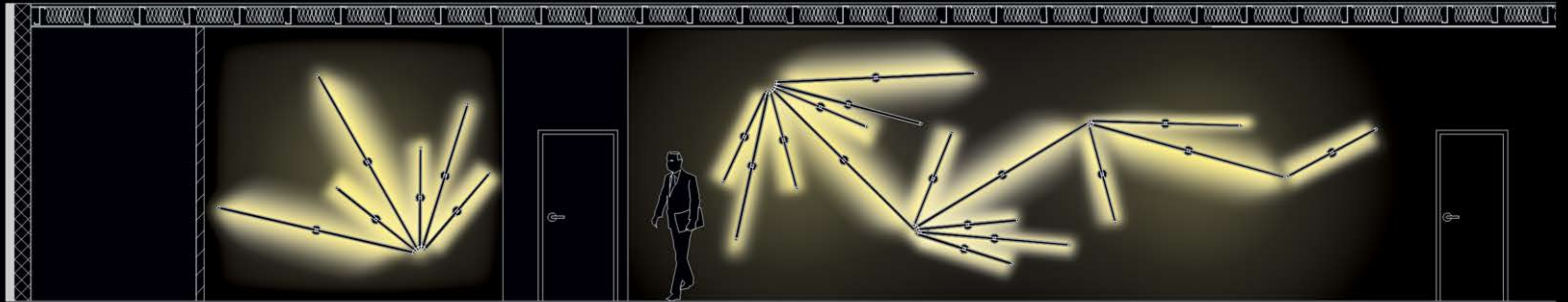
Flex Space Example



The Flex space, being the main room, is adaptable to various events which take place in the community center. It can cater for a night-time warm ambient lighting for a wedding or an engagement through the chandeliers and sconces. It can also be brightly lit in the daytime for a council meeting through the downlights.



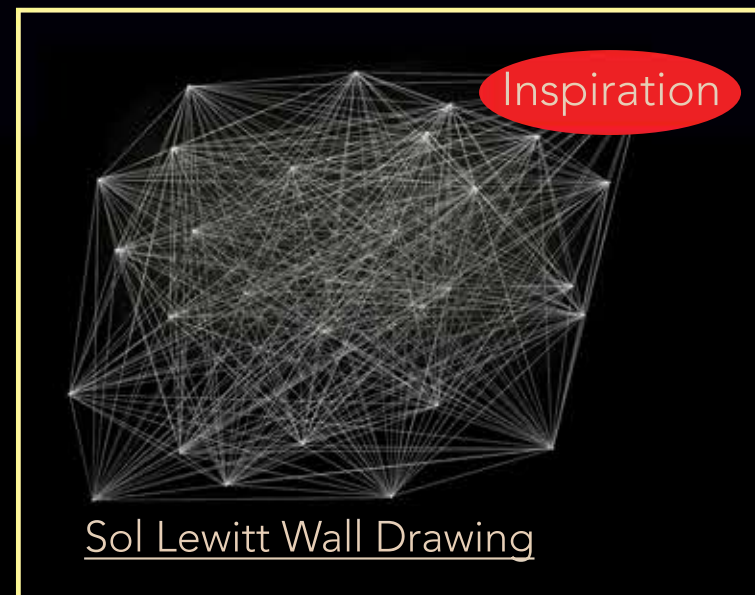
Foyer Hallway



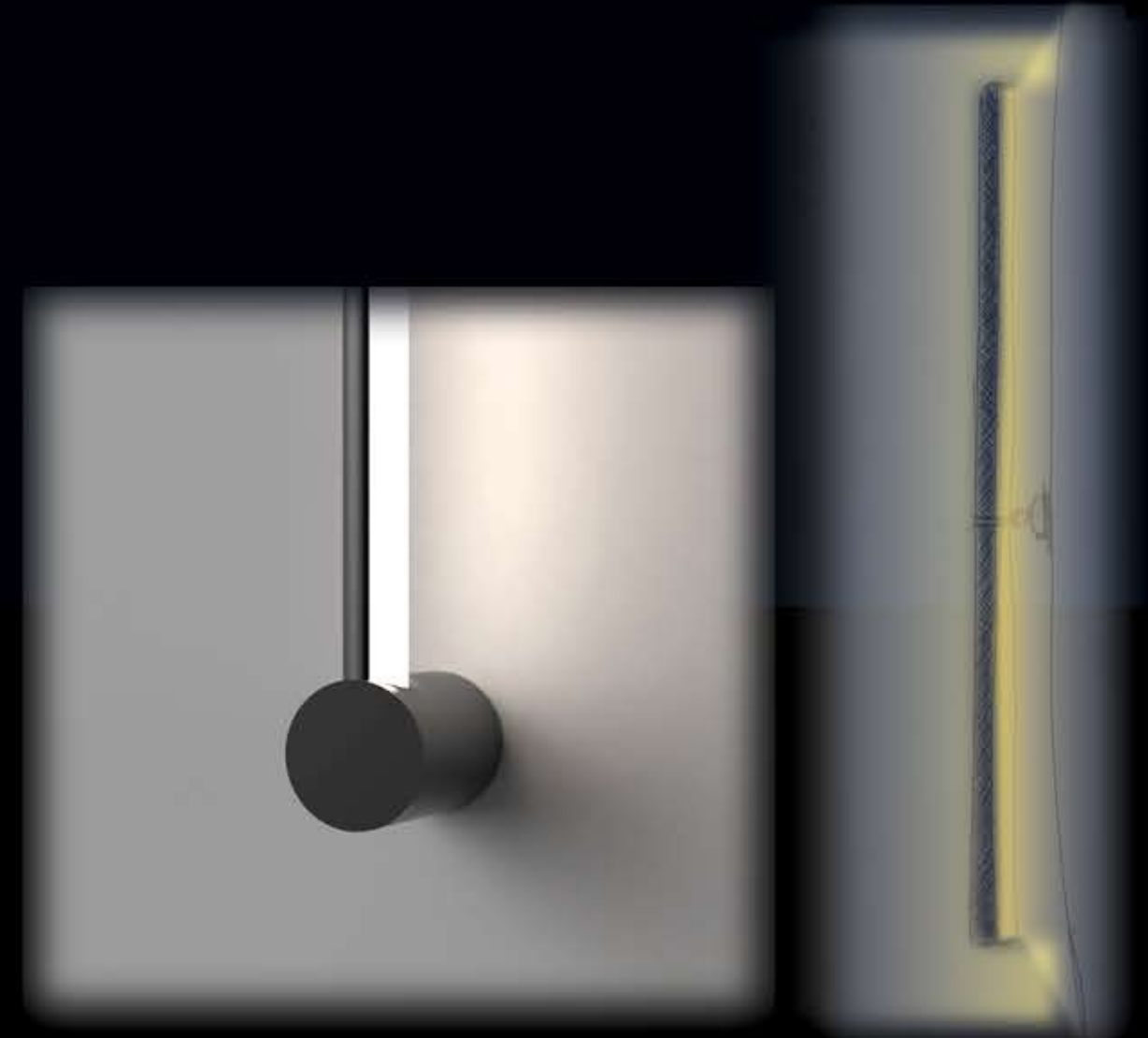
Front View



Key



Sol Lewitt Wall Drawing



Flex Space - Situation A
Downlights & Cool color temperature for council meetings and other morning events



Flex Space - Situation B

Chandeliers & sconces with warmer temperature & dimmer brightness for more intimate night events such as engagements



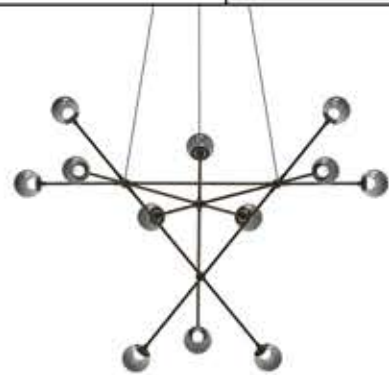
Flex Space - Situation C
Focus on stage for events that have a performance



Light Paths

FIXTURE SCHEDULE

	PLOT		FIXTURE					LAMP			
	Fixture Type	Room	Manufacturer	Qty	Details	Lumens	Kelvin	Qty	Watts	V. Input	Dimming
Decorative Pendants	LP-01	Flex	Sonneman	3	Proton - Beta LED Pendant Polished Black Nickel	2,640	3,000	12	30	120	TRIAC / ELV
	LP-02	Bathroom	Juniper	2	Thin Primaries Triangle 36"	2,760	3,000	3	28.8	120	0-10 V
	LP-03	Nursery	Juniper	1	Thin Solids Diamond 12"	4,050	3,000	9	45.9	120	0-10 V
	LP-04	Nursery	Juniper	1	Thin Solids Cube 12"	5,400	3,000	12	61.2	120	0-10 V
	LP-05	Nursery	Juniper	1	Thin Solids Tetrahedron 12"	2,700	3,000	6	30.6	120	0-10 V
Wall Mount Sconces	LSC-01	Flex	Sonneman	28	Sabon - LED Triple Sconce Satin Black	990	3,000	3	3	120	TRIAC / ELV
	LSC-02	Hallway	Sonneman	11	Purolinear 360 - 24" Double Linear LED Wall Bar Satin Black	1,380	3,000	2	7	120	TRIAC / ELV
	LSC-03	Hallway	Sonneman	5	Purolinear 360 - 36" Double Linear LED Wall Bar Satin Black	1,820	3,000	2	10	120	TRIAC / ELV
	LSC-04	Hallway	Sonneman	6	Purolinear 360 - 48" Double Linear LED Wall Bar Satin Black	2,240	3,000	2	13	120	TRIAC / ELV
	LSC-05	Bathroom Stalls	Vibia	11	Millenium 27" Adjustable Reflector 8093	1,092		1	24	120-277	1-10 V
	LSC-06	Bathroom Mirror	Vibia	6	Millenium 27" 8090	1,708		1	24	120-277	1-10 V
	LSC-07	Bathroom Mirror	Vibia	4	Millenium 50.5" 8092	3,924		1	54	120-277	1-10 V
Linear Fixtures	LL-01	Foyer	Bruck	8	AIRbar T-Bar Mount 0.5" X 12"	495	4,000	1	4.1	24.7	0-10 V
	LL-02	Foyer	Bruck	130	AIRbar T-Bar Mount 0.5" X 24"	990	4,000	1	8.2	24.7	0-10 V
	LL-03	Nursery Staircase	AGI (Gen LED)	46"	RibbonRayz IP-20 LED Light Tape	341 per foot	3,000	1	2.2/foot	24 DC	None
Surface Mount	LSM-01	Foyer Cabinets	Juniper	2	Thin Surface Mount Display Light - 36" Three Sections	920	3,000	3	9.6	120	0-10 V
	LSM-02	Foyer Cabinets	Juniper	1	Thin Surface Mount Display Light - 36" Two Sections	920	3,000	2	9.6	120	0-10 V
	LSM-03	Foyer Cabinets	AGI (Gen LED)	298"	RibbonRayz IP-20 LED Light Tape	369	4,000	1	2.2/foot	24 DC	None
Recessed Downlight	LD-01	Flex Space	Ketra Lighting	54	D3 Adjustable Round, 40° High Output	1,087	1,400 - 10,000	1	18	120-277	0.1 - 100%
Adjustable Accent	LA-01	Flex / Stage	Chauvet	8	Rogue R2 Wash	5,800	variable	1	339	120 AC	DMX
	LA-02	Flex / Stage	ETC	2	ColorSource Raceway 16'	NA	NA	NA	NA	120-240 VAC	DMX



LP-01



LP-02



LP-03



LP-04

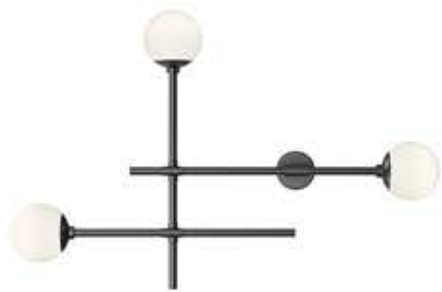


LP-05

Light Paths

FIXTURE SCHEDULE

	PLOT		FIXTURE					LAMP			
	Fixture Type	Room	Manufacturer	Qty	Details	Lumens	Kelvin	Qty	Watts	V. Input	Dimming
Decorative Pendants	LP-01	Flex	Sonneman	3	Proton - Beta LED Pendant Polished Black Nickel	2,640	3,000	12	30	120	TRIAC / ELV
	LP-02	Bathroom	Juniper	2	Thin Primaries Triangle 36"	2,760	3,000	3	28.8	120	0-10 V
	LP-03	Nursery	Juniper	1	Thin Solids Diamond 12"	4,050	3,000	9	45.9	120	0-10 V
	LP-04	Nursery	Juniper	1	Thin Solids Cube 12"	5,400	3,000	12	61.2	120	0-10 V
	LP-05	Nursery	Juniper	1	Thin Solids Tetrahedron 12"	2,700	3,000	6	30.6	120	0-10 V
Wall Mount Sconces	LSC-01	Flex	Sonneman	28	Sabon - LED Triple Sconce Satin Black	990	3,000	3	3	120	TRIAC / ELV
	LSC-02	Hallway	Sonneman	11	Purolinear 360 - 24" Double Linear LED Wall Bar Satin Black	1,380	3,000	2	7	120	TRIAC / ELV
	LSC-03	Hallway	Sonneman	5	Purolinear 360 - 36" Double Linear LED Wall Bar Satin Black	1,820	3,000	2	10	120	TRIAC / ELV
	LSC-04	Hallway	Sonneman	6	Purolinear 360 - 48" Double Linear LED Wall Bar Satin Black	2,240	3,000	2	13	120	TRIAC / ELV
	LSC-05	Bathroom Stalls	Vibia	11	Millenium 27" Adjustable Reflector 8093	1,092		1	24	120-277	1-10 V
	LSC-06	Bathroom Mirror	Vibia	6	Millenium 27" 8090	1,708		1	24	120-277	1-10 V
	LSC-07	Bathroom Mirror	Vibia	4	Millenium 50.5" 8092	3,924		1	54	120-277	1-10 V
Linear Fixtures	LL-01	Foyer	Bruck	8	AIRbar T-Bar Mount 0.5" X 12"	495	4,000	1	4.1	24.7	0-10 V
	LL-02	Foyer	Bruck	130	AIRbar T-Bar Mount 0.5" X 24"	990	4,000	1	8.2	24.7	0-10 V
	LL-03	Nursery Staircase	AGI (Gen LED)	46"	RibbonRayz IP-20 LED Light Tape	341 per foot	3,000	1	2.2/foot	24 DC	None
Surface Mount	LSM-01	Foyer Cabinets	Juniper	2	Thin Surface Mount Display Light - 36" Three Sections	920	3,000	3	9.6	120	0-10 V
	LSM-02	Foyer Cabinets	Juniper	1	Thin Surface Mount Display Light - 36" Two Sections	920	3,000	2	9.6	120	0-10 V
	LSM-03	Foyer Cabinets	AGI (Gen LED)	298"	RibbonRayz IP-20 LED Light Tape	369	4,000	1	2.2/foot	24 DC	None
Recessed Downlight	LD-01	Flex Space	Ketra Lighting	54	D3 Adjustable Round, 40° High Output	1,087	1,400 - 10,000	1	18	120-277	0.1 - 100%
Adjustable Accent	LA-01	Flex / Stage	Chauvet	8	Rogue R2 Wash	5,800	variable	1	339	120 AC	DMX
	LA-02	Flex / Stage	ETC	2	ColorSource Raceway 16'	NA	NA	NA	NA	120-240 VAC	DMX



LSC-01



LSC-02/03/04



LSC-05



LSC-06/07



LL-01/02

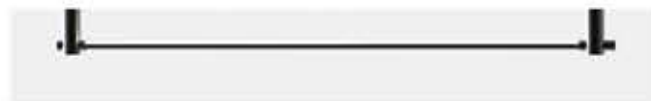


LL-03 / LSM-03

Light Paths

FIXTURE SCHEDULE

	PLOT		FIXTURE					LAMP			
	Fixture Type	Room	Manufacturer	Qty	Details	Lumens	Kelvin	Qty	Watts	V. Input	Dimming
Decorative Pendants	LP-01	Flex	Sonneman	3	Proton - Beta LED Pendant Polished Black Nickel	2,640	3,000	12	30	120	TRIAC / ELV
	LP-02	Bathroom	Juniper	2	Thin Primaries Triangle 36"	2,760	3,000	3	28.8	120	0-10 V
	LP-03	Nursery	Juniper	1	Thin Solids Diamond 12"	4,050	3,000	9	45.9	120	0-10 V
	LP-04	Nursery	Juniper	1	Thin Solids Cube 12"	5,400	3,000	12	61.2	120	0-10 V
	LP-05	Nursery	Juniper	1	Thin Solids Tetrahedron 12"	2,700	3,000	6	30.6	120	0-10 V
Wall Mount Sconces	LSC-01	Flex	Sonneman	28	Sabon - LED Triple Sconce Satin Black	990	3,000	3	3	120	TRIAC / ELV
	LSC-02	Hallway	Sonneman	11	Purolinear 360 - 24" Double Linear LED Wall Bar Satin Black	1,380	3,000	2	7	120	TRIAC / ELV
	LSC-03	Hallway	Sonneman	5	Purolinear 360 - 36" Double Linear LED Wall Bar Satin Black	1,820	3,000	2	10	120	TRIAC / ELV
	LSC-04	Hallway	Sonneman	6	Purolinear 360 - 48" Double Linear LED Wall Bar Satin Black	2,240	3,000	2	13	120	TRIAC / ELV
	LSC-05	Bathroom Stalls	Vibia	11	Millenium 27" Adjustable Reflector 8093	1,092		1	24	120-277	1-10 V
	LSC-06	Bathroom Mirror	Vibia	6	Millenium 27" 8090	1,708		1	24	120-277	1-10 V
	LSC-07	Bathroom Mirror	Vibia	4	Millenium 50.5" 8092	3,924		1	54	120-277	1-10 V
Linear Fixtures	LL-01	Foyer	Bruck	8	AIRbar T-Bar Mount 0.5" X 12"	495	4,000	1	4.1	24.7	0-10 V
	LL-02	Foyer	Bruck	130	AIRbar T-Bar Mount 0.5" X 24"	990	4,000	1	8.2	24.7	0-10 V
	LL-03	Nursery Staircase	AGI (Gen LED)	46"	RibbonRayz IP-20 LED Light Tape	341 per foot	3,000	1	2.2/foot	24 DC	None
Surface Mount	LSM-01	Foyer Cabinets	Juniper	2	Thin Surface Mount Display Light - 36" Three Sections	920	3,000	3	9.6	120	0-10 V
	LSM-02	Foyer Cabinets	Juniper	1	Thin Surface Mount Display Light - 36" Two Sections	920	3,000	2	9.6	120	0-10 V
	LSM-03	Foyer Cabinets	AGI (Gen LED)	298"	RibbonRayz IP-20 LED Light Tape	369	4,000	1	2.2/foot	24 DC	None
Recessed Downlight	LD-01	Flex Space	Ketra Lighting	54	D3 Adjustable Round, 40° High Output	1,087	1,400 - 10,000	1	18	120-277	0.1 - 100%
Adjustable Accent	LA-01	Flex / Stage	Chauvet	8	Rogue R2 Wash	5,800	variable	1	339	120 AC	DMX
	LA-02	Flex / Stage	ETC	2	ColorSource Raceway 16'	NA	NA	NA	NA	120-240 VAC	DMX



LSM-01/02



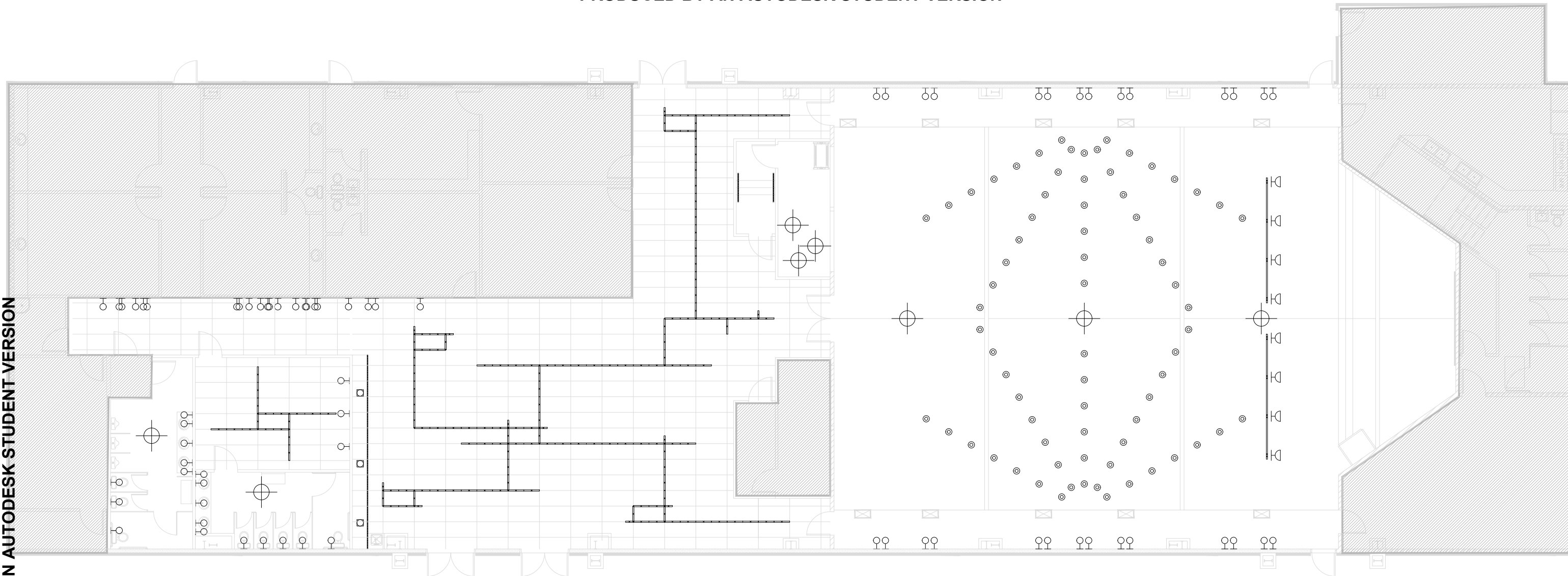
LD-01/02



LA-01



LA-02



Light plot - Top View
Scale 1:150

1 Sht-1



Illuminating
ENGINEERING SOCIETY
LOS ANGELES SECTION

April 29, 2020
SCALE 1:150

LIGHT PATHS

Light Plot - Floor & Ceiling

Sheet 1/4

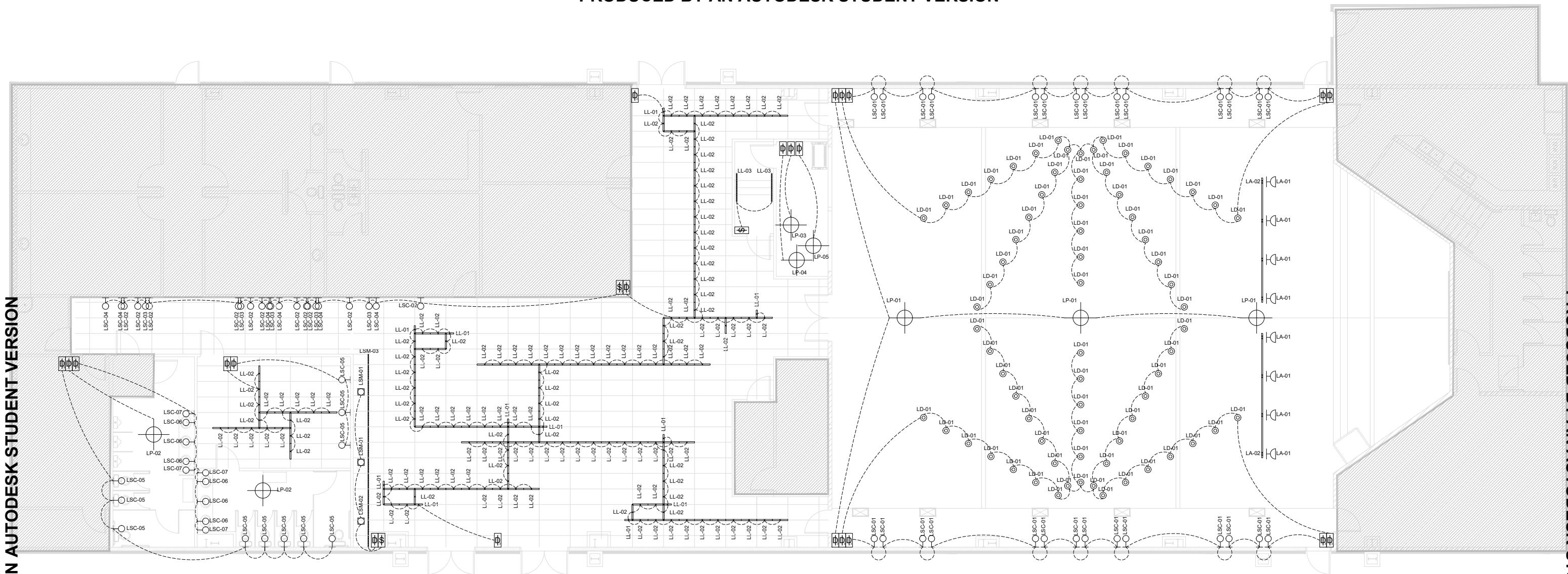


OMAR MADKOUR
LIGHTING DESIGN

Lighting Designer - Omar Madkour
OmarBMadkour@gmail.com
(661) 219 - 3538

**LIGHTING
LEGEND**

- | | | | | | |
|---|-------------------------|---|-----------------------|---|-----------------------------|
| ⌘ | LA - Adjustable Accent | ⌘ | 3 Way Switch Location | □ | LSM - Surface Mount |
| ⊙ | LP - Decorative Pendant | ⌘ | Switch Location | — | LL - Linear LED Tape |
| — | LL - Linear Recessed | ⌘ | 3 Way Dimmer Location | ⊙ | LD - Recessed Downlight |
| ⊙ | LSC - Wall Mount Sconce | ⌘ | Dimmer Location | — | LA - Stage Lighting Raceway |



Light plot (Annotated) - Top View
Scale 1:150

1 | Sht-2



April 29, 2020
SCALE 1:150

LIGHT PATHS

Light Plot (Annotated)

Sheet 2/4

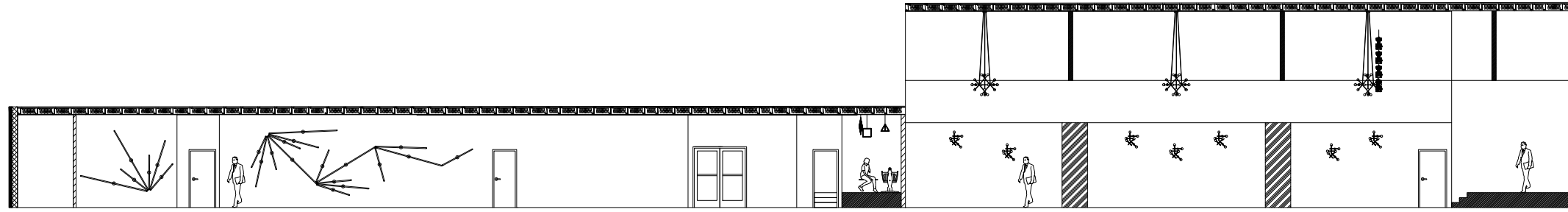


OMAR MADKOUR
LIGHTING DESIGN

Lighting Designer - Omar Madkour
OmarBMadkour@gmail.com
(661) 219 - 3538

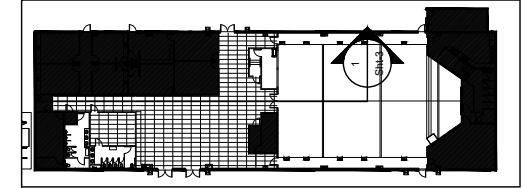
LIGHTING LEGEND

- | | | | | | |
|---|-------------------------|---|-----------------------|---|-----------------------------|
| ⌋ | LA - Adjustable Accent | Ⓢ | 3 Way Switch Location | □ | LSM - Surface Mount |
| ⊙ | LP - Decorative Pendant | Ⓢ | Switch Location | — | LL - Linear LED Tape |
| ⌋ | LL - Linear Recessed | Ⓢ | 3 Way Dimmer Location | ⊙ | LD - Recessed Downlight |
| ⊙ | LSC - Wall Mount Sconce | Ⓢ | Dimmer Location | — | LA - Stage Lighting Raceway |



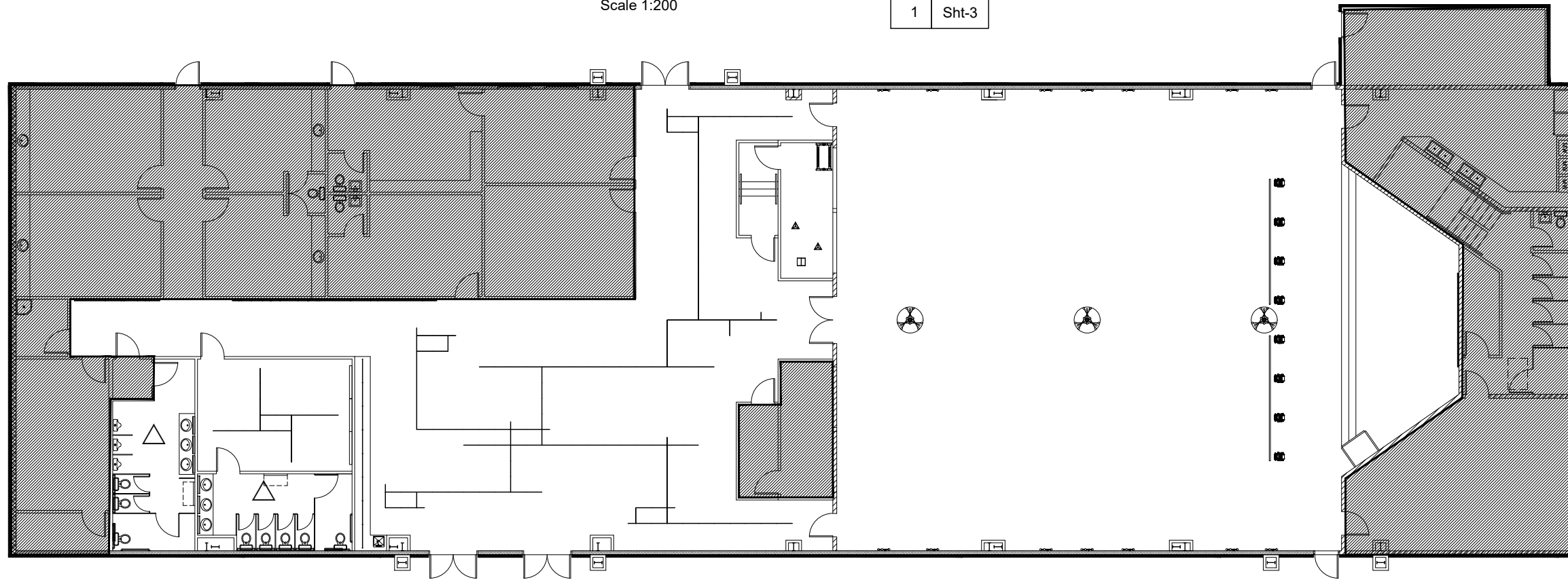
Fixtures Layout - Cross Section
Scale 1:200

1 Sht-3



Detail - Section Direction
Scale 1:1000

1b Sht-3



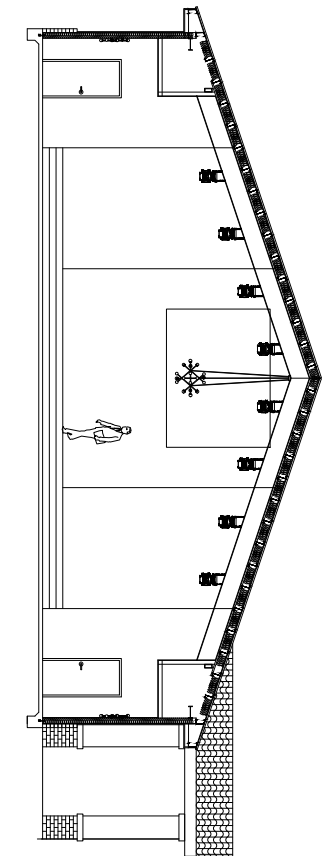
Fixtures Layout - Top View
Scale 1:200

3 Sht-3

PRODUCED BY AN AUTODESK STUDENT VERSION

Mirror Lights Layout
Scale 1:200

2 Sht-3



Fixtures Layout - Front Elevation
Scale 1:200

4 Sht-3

PRODUCED BY AN AUTODESK STUDENT VERSION

Sheet 3/4



April 29, 2020
SCALE 1:200

LIGHT PATHS

Fixture Layout

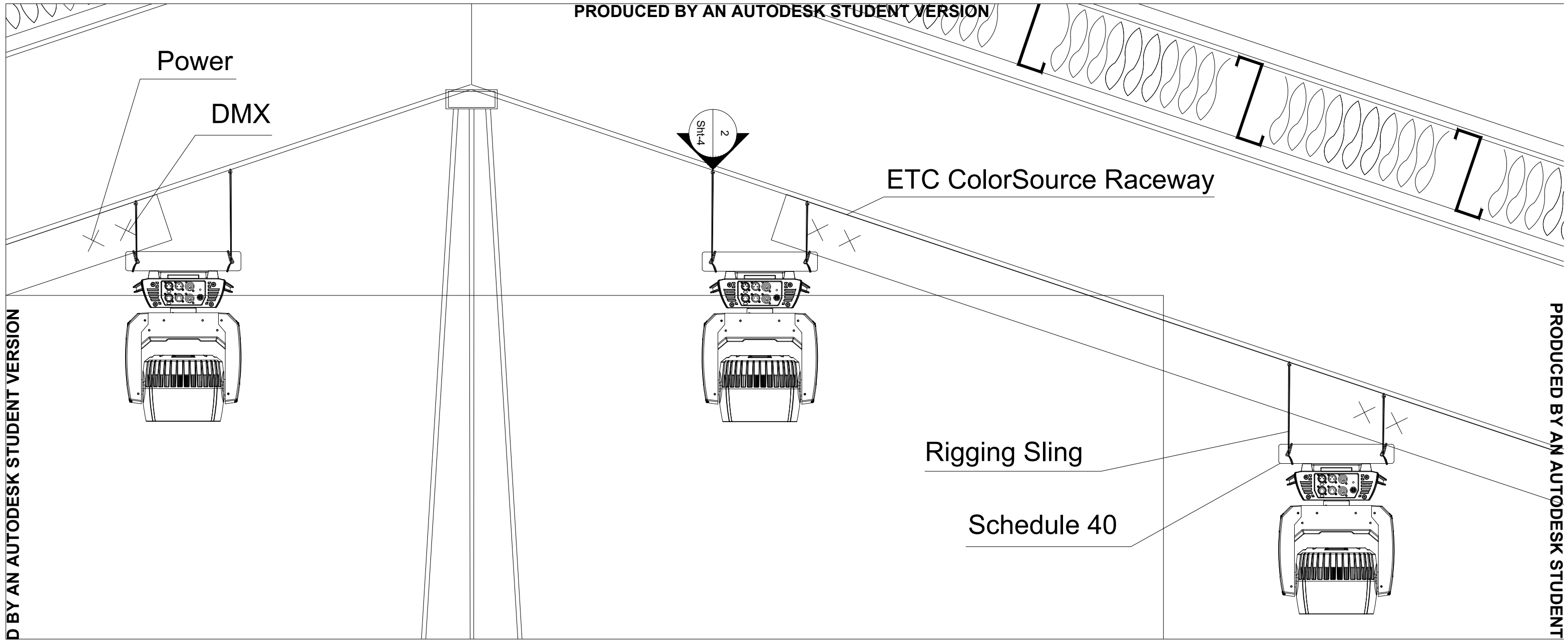
FIXTURES ON THIS PLATE ARE DRAWN TO SCALE



Lighting Designer - Omar Madkour
OmarBMadkour@gmail.com
(661) 219 - 3538

LIGHTING
LEGEND

- | | | | | | |
|---|-------------------------|---|-----------------------|---|-----------------------------|
| ⊕ | LA - Adjustable Accent | ⊞ | 3 Way Switch Location | □ | LSM - Surface Mount |
| ⊙ | LP - Decorative Pendant | ⊞ | Switch Location | — | LL - Linear LED Tape |
| — | LL - Linear Recessed | ⊞ | 3 Way Dimmer Location | ⊙ | LD - Recessed Downlight |
| ⊙ | LSC - Wall Mount Sconce | ⊞ | Dimmer Location | — | LA - Stage Lighting Raceway |



PRODUCED BY AN AUTODESK STUDENT VERSION

PRODUCED BY AN AUTODESK STUDENT VERSION

Stage Lights Rigging
Scale 1:10

1 Sht-4

Hook attached to vaulted ceiling



Illuminating
ENGINEERING SOCIETY
LOS ANGELES SECTION

M Lighting Designer - Omar Madkour
OmarBMadkour@gmail.com
(661) 219 - 3538

OMAR MADKOUR
LIGHTING DESIGN

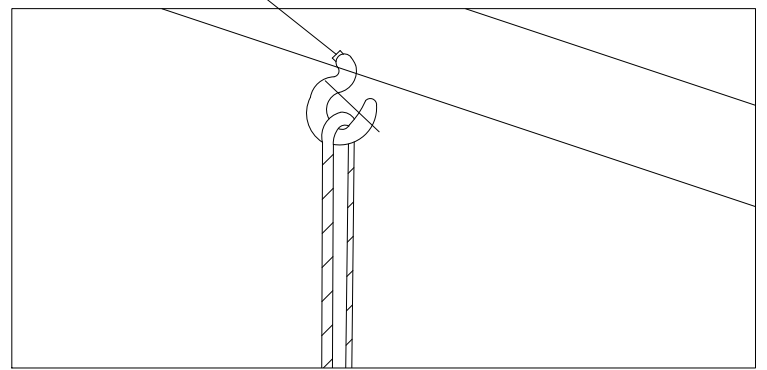
April 29, 2020
SCALE - Variable

LIGHT PATHS

Stage Fixture - Detail

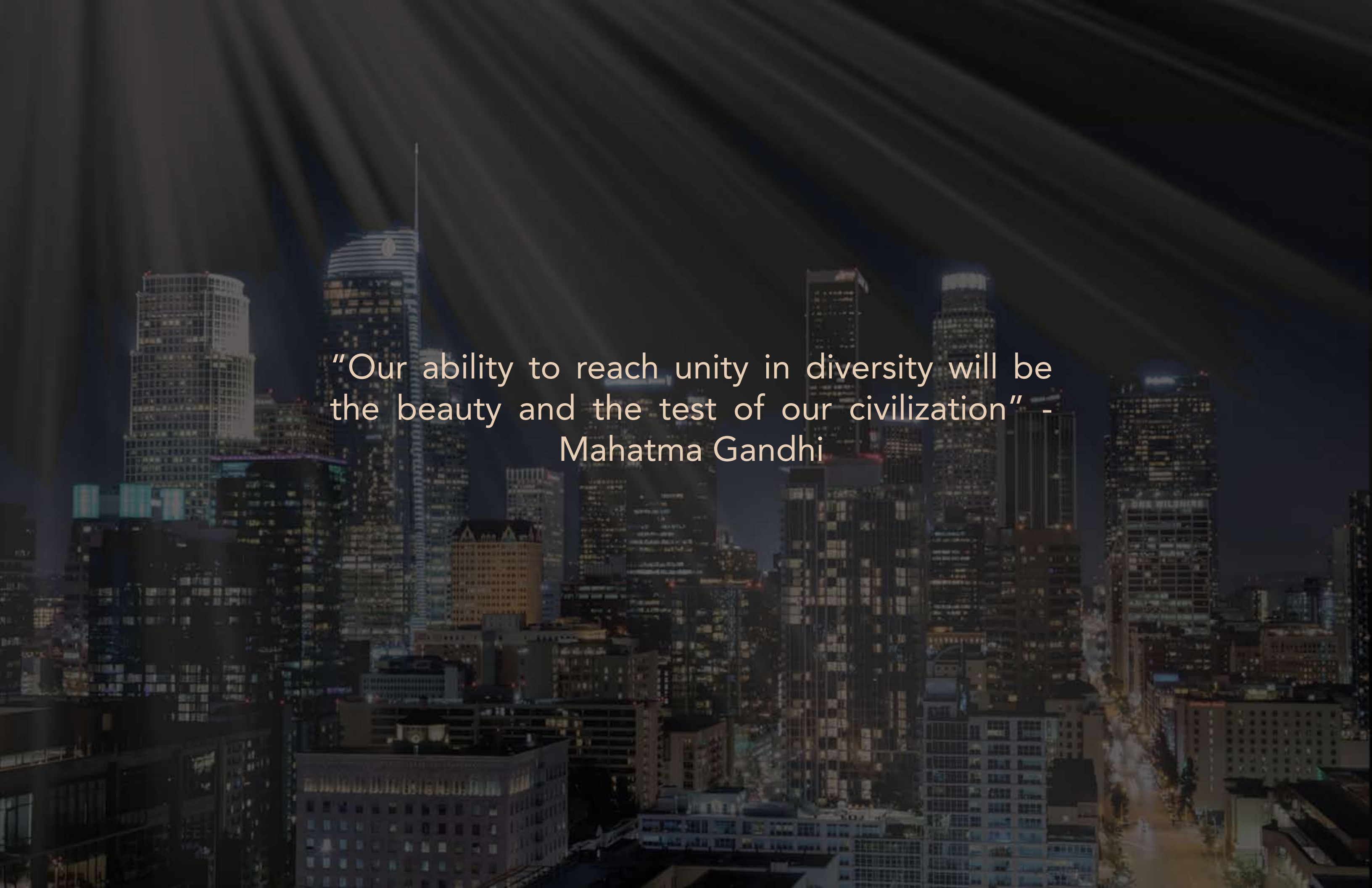
Sheet 4/4

LIGHTING LEGEND	⊕ LA - Adjustable Accent	⊞ 3 Way Switch Location	□ LSM - Surface Mount
	⊙ LP - Decorative Pendant	⊞ Switch Location	- LL - Linear LED Tape
	- LL - Linear Recessed	⊞ 3 Way Dimmer Location	⊙ LD - Recessed Downlight
	⊙ LSC - Wall Mount Sconce	⊞ Dimmer Location	- LA - Stage Lighting Raceway

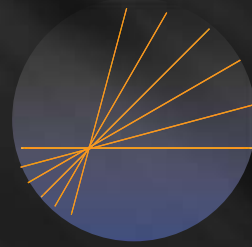


Hang Detail
Scale 1:1

2 Sht-4

An aerial night view of a city skyline, likely New York City, with numerous skyscrapers illuminated. The image is dark, with the city lights providing the primary light source. A quote is overlaid in the center in a light-colored font.

“Our ability to reach unity in diversity will be the beauty and the test of our civilization” - Mahatma Gandhi



Light Paths

Designed & Presented by Omar Madkour

www.omarmadkour.com

OmarBMadkour@gmail.com

+1 (661) 219-3538