

Exit needed somewhere on the US wall

Average 9" needed between acting area & US wall

Acting Area, taped out in the space

Sandbags or weights added on top of wall's bracing

1 Sht-5

12'-0"

3'-0"

17'-0"

20'-0"

13'-0"

13'-0"

6'-6"

In a Blackbox Theatre
 - a minimum distance of 6'6" between front row & acting area is required
 - elevate every row with a minimum of 12"

+6"

+12"

1 [Floor Plan]
 Sht-1 SCALE: 1/2" = 1'-0"

NOTES
 - This is a generic touring packet, unpecific to a venue.
 - Kindly review in tandem with show's tech rider.

OMAR MADKOUR
 Lighting Designer
 www.omarmadkour.com
 OmarBMadkour@gmail.com
 +1 (661) 212-3358



ALL DRAWINGS, DESIGN IDEAS AND PAPERWORK IN THIS PACKET ARE CREATED BY, AND REMAIN PROPERTY OF OMAR MADKOUR. DO NOT PRODUCE, REPLICATE OR ALTER WITHOUT CONSENT. THIS DRAWING DOES NOT REPLACE THE PROFESSIONAL OPINION OF A CERTIFIED ENGINEER. THE DESIGNER IS NOT REQUIRED TO DETERMINE THE STRUCTURAL OR ELECTRICAL APPROPRIATENESS FOR THE VENUE, AND DOES NOT ASSUME RESPONSIBILITY FOR IMPROPER ENGINEERING OR HANDLING. ALL MATERIALS AND CONSTRUCTION MUST COMPLY WITH LOCAL FIRE, SAFETY, & ENERGY CODES.

CALARTS Center for New Performance
El Camino Donde
Nosotros Lloramos

CREATED BY Lagartijas Tiradas Al Sol
 (Luisa Padro & Gabino Rodriguez)
 LIGHTING DESIGNER Omar Madkour
 VIDEO DESIGNER Hsuan-Kuang Hsieh

VENUE NON-SPECIFIC

#	BY	REVISION	DATE
D	OM	Surtitles Screen Added	1/23/20
C	OM	Screen Position Revised	1/22/20
B	OM	Layout Final - BUILD	1/17/20

Scenic - Floor Plan
 01/23/2020
 DRAFTED BY O.M.
 SCALE: 1/2" = 1'-0"
 BEST PRINT ON ARCH D

Sht-1 / 6

ELEC_8

ELEC_7

ELEC_6

ELEC_5

ELEC_4

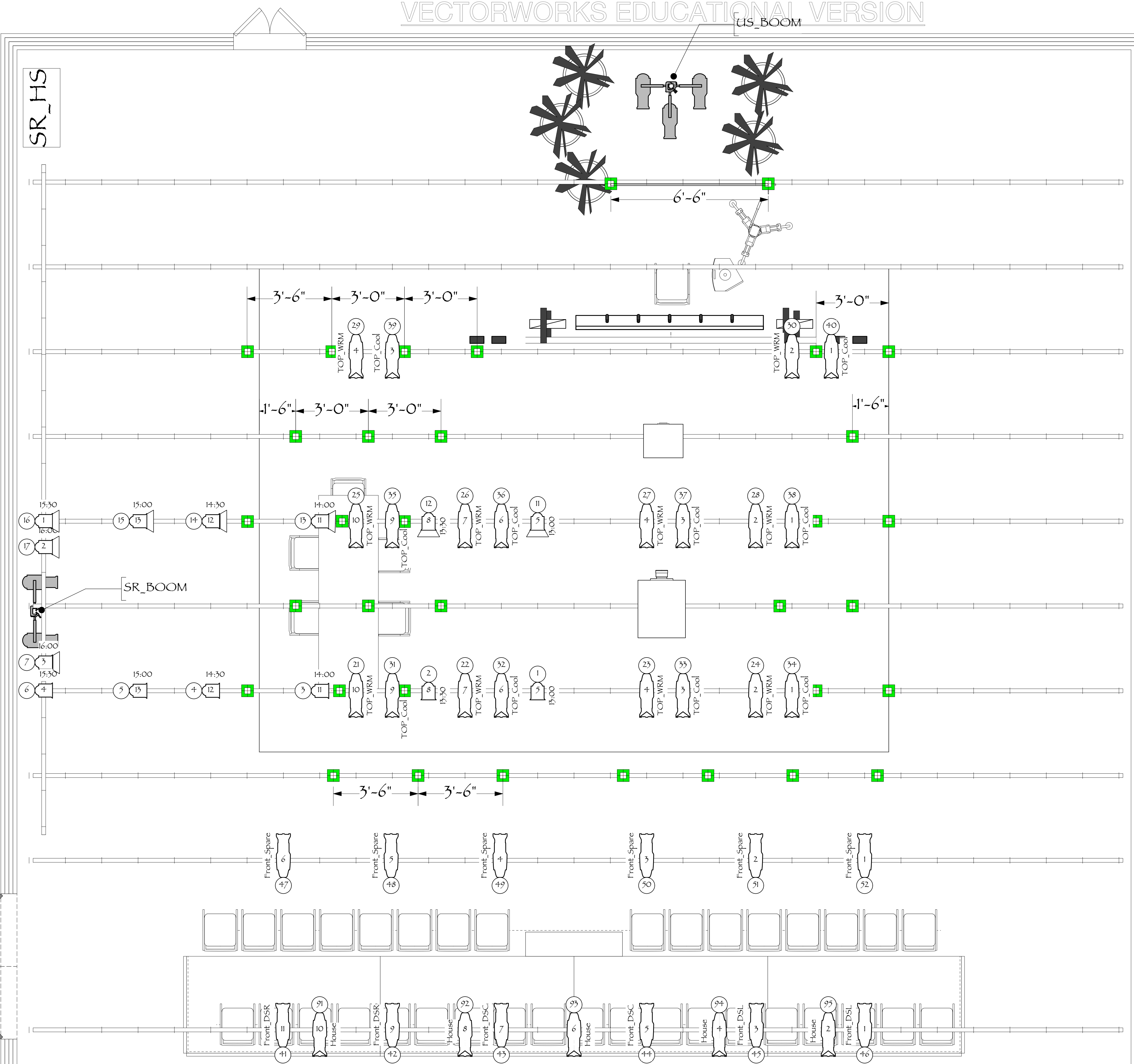
ELEC_3

ELEC_2

ELEC_1

FOH_1

FOH_2



KEY TO PLOT

Instrument Key

- Altman 6in Fres @ 750w
- ETC Source4 19° @ 575w
- ETC Source4 36° @ 575w
- ETC Source4 50° @ 575w
- One Cell Halogen Work Light
- LED Flame Bulb, T-60, medium base

Accessory Key

- 7.5in 4 Leaf Barn Door
- 18" sidearm

Legend Key

Unit: xx
Purpose: xxx
Channel: x

Sound Key

- Floor Monitor

Rigging Key

- Overhead Rigging Point

Video Key

- Video Projector
- Surtitles Projector

NOTES

- This is a generic touring packet, unpecific to a venue.
- Kindly review in tandem with show's tech rider.
- Please provide extra RII?
- Tick mark spacing at 18"
- Accessories, Gels & Gobos as indicated in the Lightwright package please.

OMAR MADKOUR
Lighting Designer
www.omarmadkour.com
Omar.Madkour@gmail.com
+1 (661) 212-3358

OMAR MADKOUR LIGHTING DESIGN

ALL DRAWINGS, DESIGN IDEAS AND PAPERWORK IN THIS PACKET ARE CREATED BY, AND REMAIN PROPERTY OF OMAR MADKOUR. DO NOT PRODUCE, REPLICATE OR ALTER WITHOUT CONSENT. THIS DRAWING DOES NOT REPLACE THE PROFESSIONAL OPINION OF A CERTIFIED ENGINEER. THE DESIGNER IS NOT REQUIRED TO DETERMINE THE STRUCTURAL OR ELECTRICAL APPROPRIATENESS FOR THE VENUE, AND DOES NOT ASSUME RESPONSIBILITY FOR IMPROPER ENGINEERING OR HANDLING. ALL MATERIALS AND CONSTRUCTION MUST COMPLY WITH LOCAL FIRE, SAFETY, & ENERGY CODES.

CALARTS Center for New Performance
*El Camino Donde
Nosotros Lloramos*

CREATED BY: Lagartijas Tiradas Al Sol
(Luisa Padro & Gabino Rodriguez)
LIGHTING DESIGNER: Omar Madkour
VIDEO DESIGNER: Hsuan-Kuang Hsieh

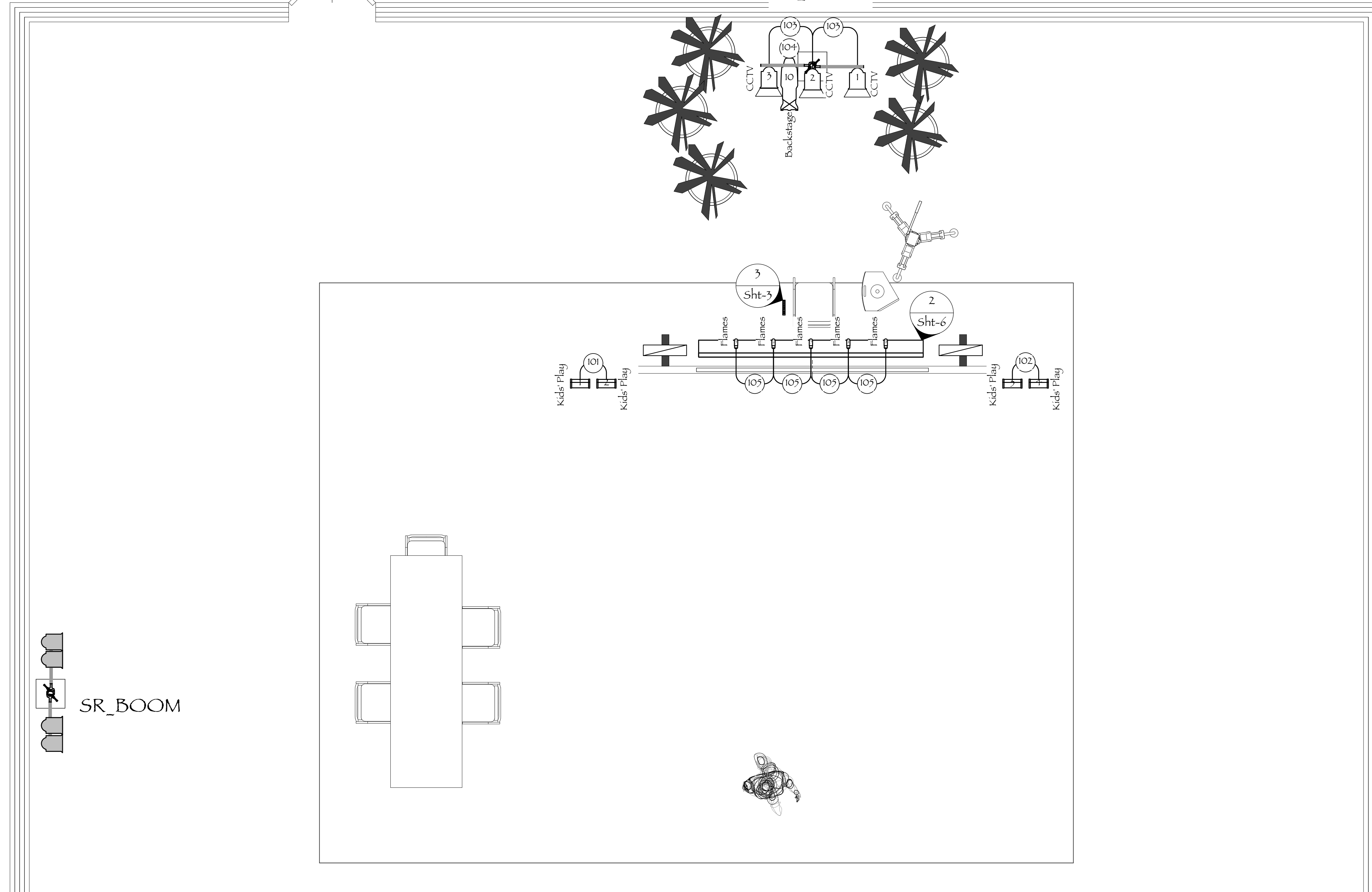
VENUE NON-SPECIFIC

#	BY	REVISION	DATE

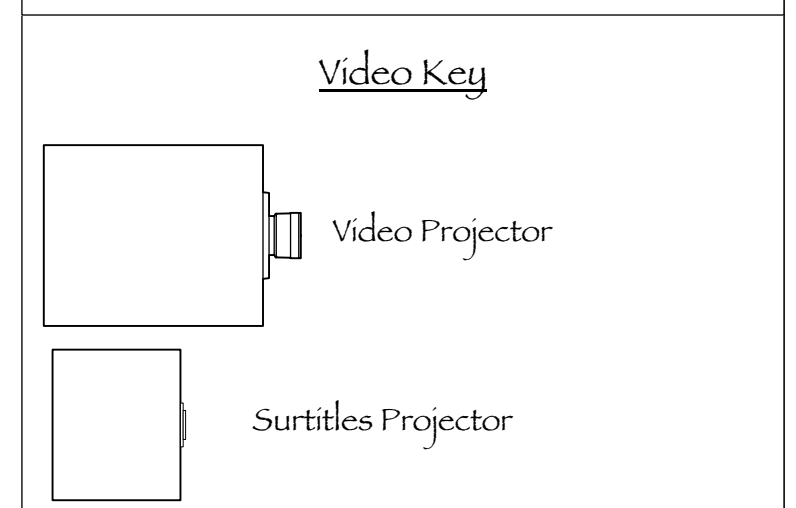
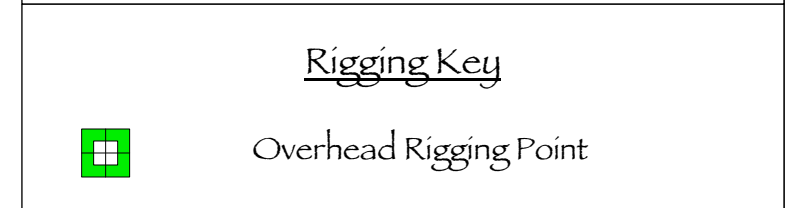
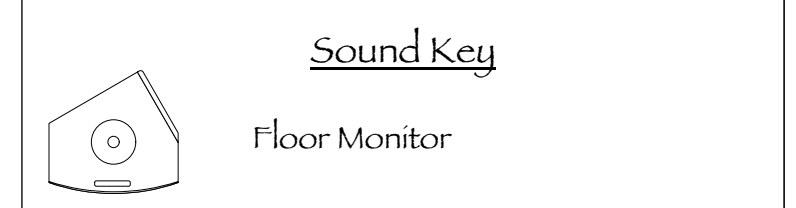
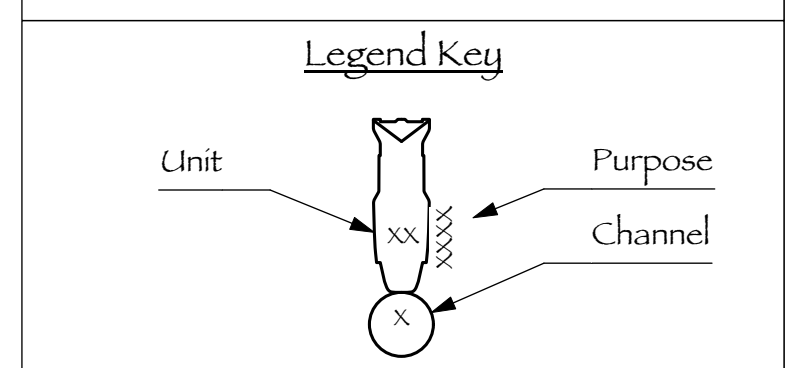
Plot - Overhead
02/06/2020
DRAFTED BY O.M.
SCALE: 1/2" = 1'-0"
BEST PRINT ON ARCH D

Sht-2
/ 6

1 [Overhead, Lights & Props]
Sht-2
SCALE: 1/2" = 1'-0"



- KEY TO PLOT**
- Instrument Key**
- Altman 6in Fres @ 750w
 - ETC Source4 19° @ 575w
 - ETC Source4 36° @ 575w
 - ETC Source4 50° @ 575w
 - One Cell Halogen Work Light
 - LED Flame Bulb, T-60, medium base
- Accessory Key**
- 7.5in 4 Leaf Barn Door
 - 18" sidearm



NOTES

- This is a generic touring packet, unspecific to a venue.
- Kindly review in tandem with show's tech rider.
- Please provide extra R119
- Tick mark spacing at 18"
- Accessories, Gels & Gobos as indicated in the Lightwright package please.

OMAR MADKOUR
Lighting Designer
www.omarmadkour.com
OmarBMadkour@gmail.com
+1 (661) 212-3358

ALL DRAWINGS, DESIGN IDEAS AND PAPERWORK IN THIS PACKET ARE CREATED BY, AND REMAIN PROPERTY OF OMAR MADKOUR. DO NOT PRODUCE, REPLICATE OR ALTER WITHOUT CONSENT. THIS DRAWING DOES NOT REPLACE THE PROFESSIONAL OPINION OF A CERTIFIED ENGINEER. THE DESIGNER IS NOT REQUIRED TO DETERMINE THE STRUCTURAL OR ELECTRICAL APPROPRIATENESS FOR THE VENUE, AND DOES NOT ASSUME RESPONSIBILITY FOR IMPROPER ENGINEERING OR HANDLING. ALL MATERIALS AND CONSTRUCTION MUST COMPLY WITH LOCAL FIRE, SAFETY, & ENERGY CODES.

CALARTS Center for New Performance
*El Camino Donde
Nosotros Lloramos*

CREATED BY Lagartijas Tiradas Al Sol
(Luisa Padro & Gabino Rodriguez)
LIGHTING DESIGNER Omar Madkour
VIDEO DESIGNER Hsuan-Kuang Hsieh

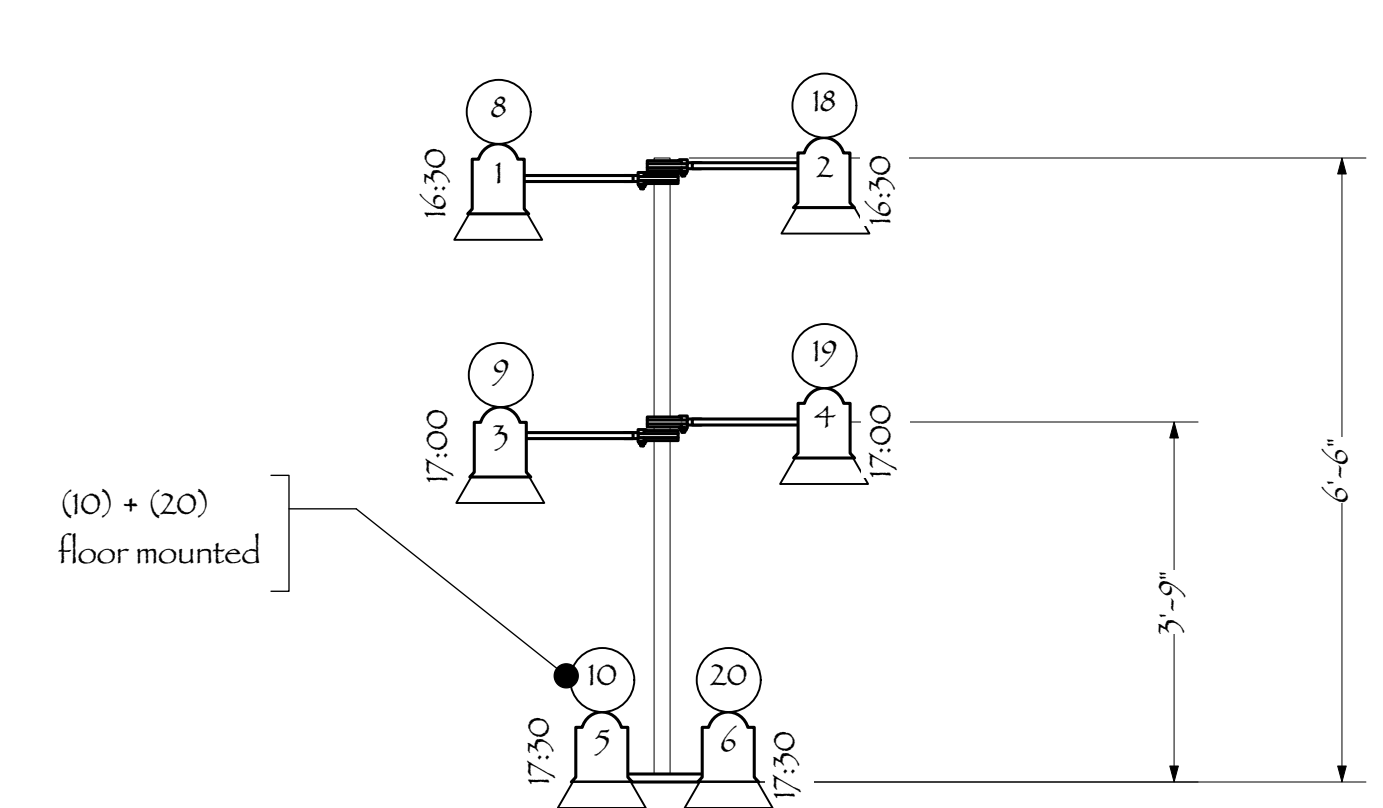
VENUE NON-SPECIFIC

#	BY	REVISION	DATE

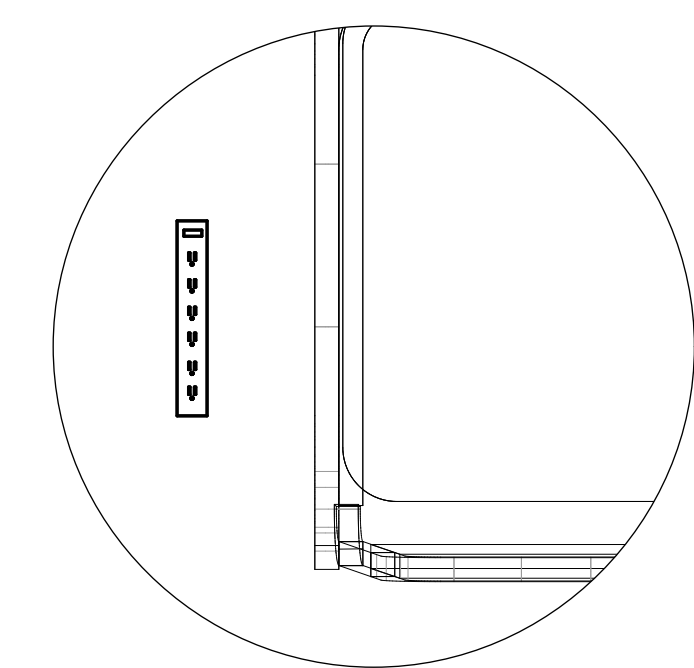
Plot - Floor Mount
02/06/2020
DRAFTED BY O.M.
SCALE: 1/2" = 1'-0"
BEST PRINT ON ARCH D

Sht-3
/ 6

1 [Floor Mount - Top]
Sht-3 SCALE: 1/2" = 1'-0"

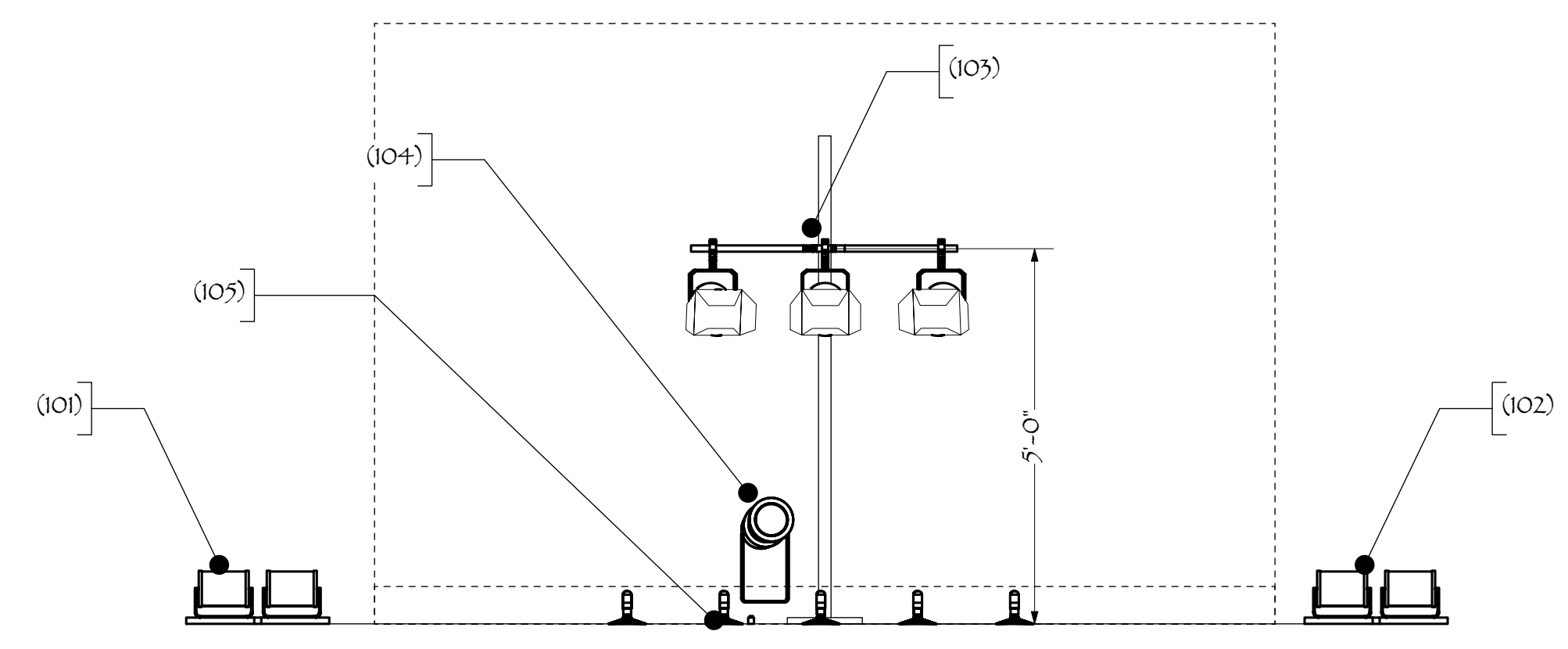


2 [Fixture Layout - SR_Boom - Front View]
Sht-3 SCALE: 1/2" = 1'-0"

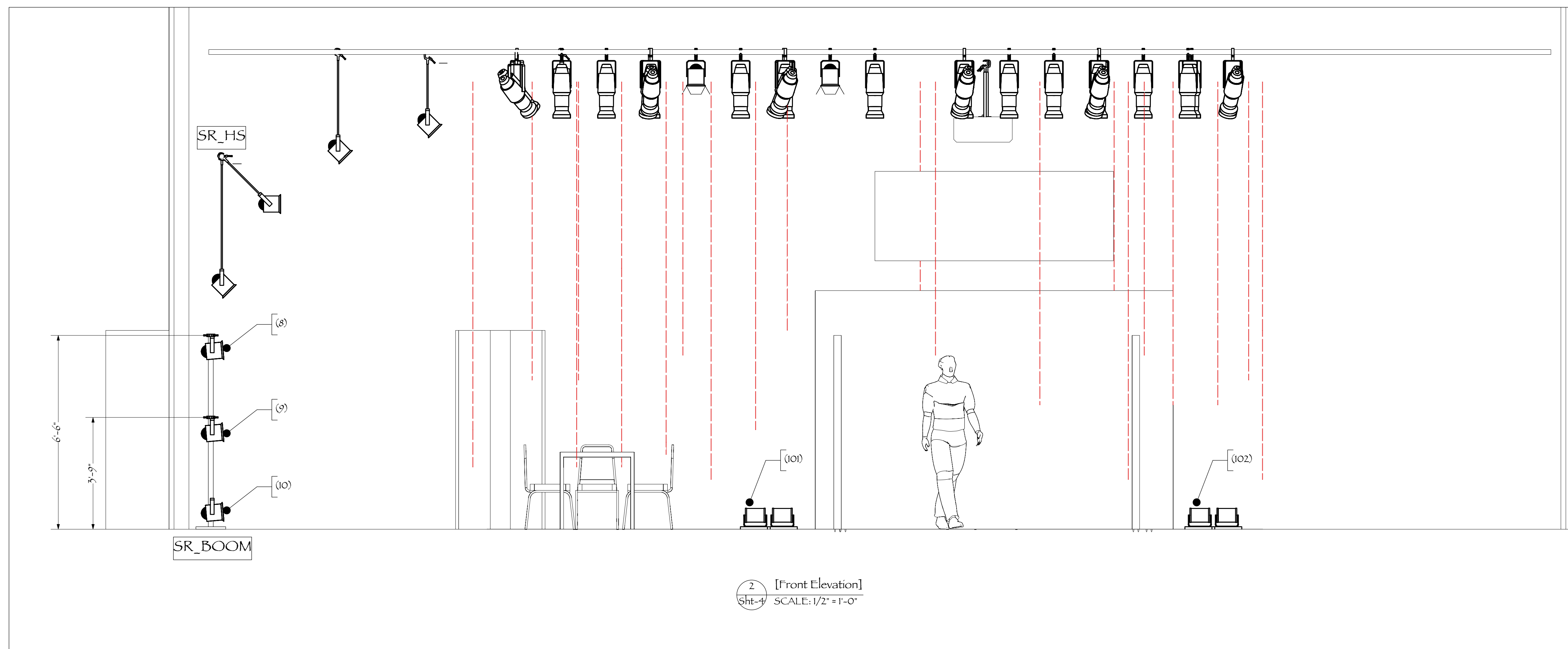
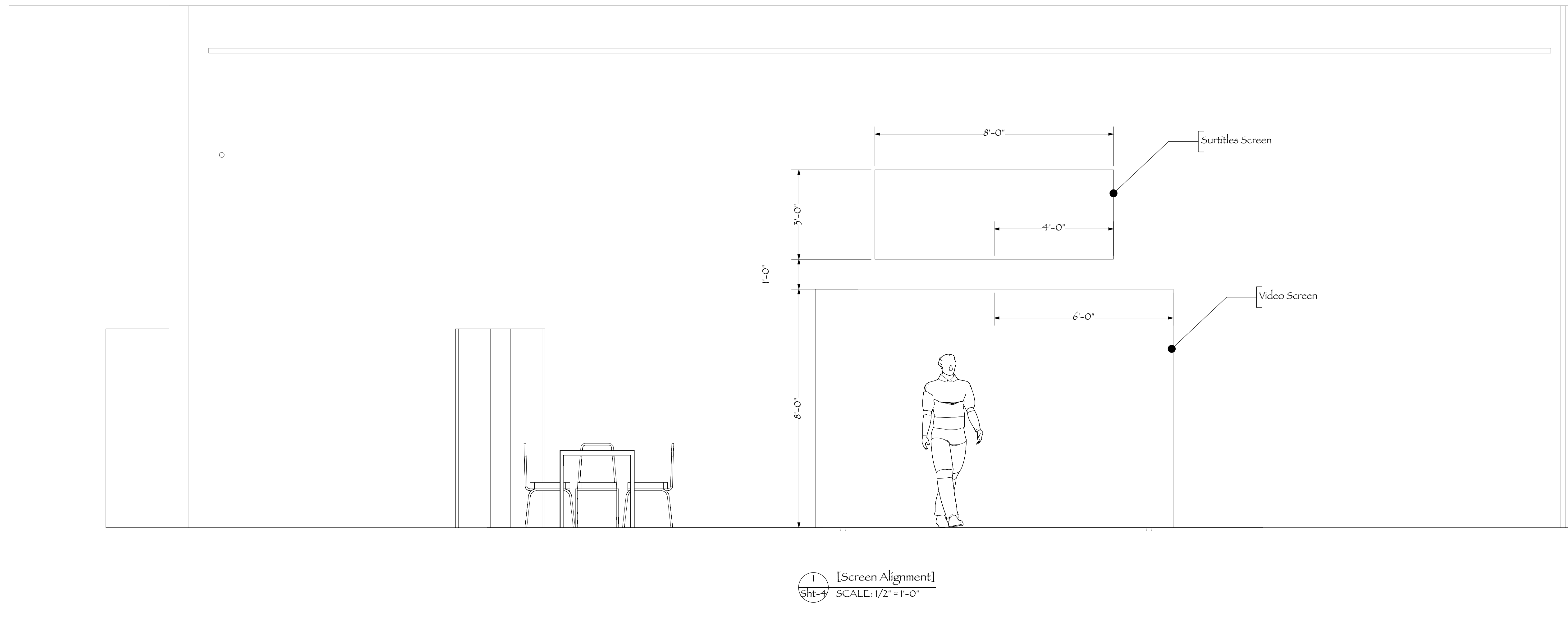


ZOOMED IN VIEW - NOTE DIFFERENT SCALE
Check Tech Rider

3 [Power Switch controlling (103)]
Sht-3 Scale: 2" = 1'-0"



4 [US_Boom + US Floor Fixtures - Front View]
Sht-3 SCALE: 1/2" = 1'-0"



KEY TO PLOT

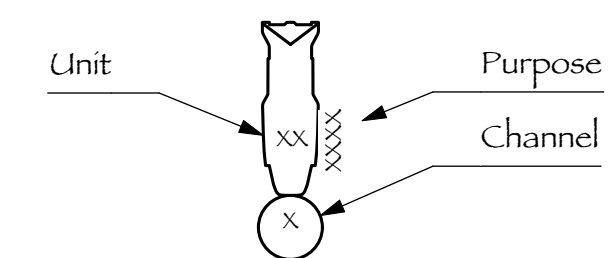
Instrument Key

- Altman 6in Fres @ 750w
- ETC Source4 19° @ 575w
- ETC Source4 36° @ 575w
- ETC Source4 50° @ 575w
- One Cell Halogen Work Light
- LED Flame Bulb, T-60, medium base

Accessory Key

- 7.5in 4 Leaf Barn Door
- 18" sidearm

Legend Key



Sound Key

- Floor Monitor

Rigging Key

- Overhead Rigging Point

Video Key

- Video Projector
- Surtitles Projector

NOTES

- This is a generic touring packet, unspecific to a venue.
- Kindly review in tandem with show's tech rider.
- This sheet is only representative of the idea of the suspended props. Exact location and trim will be determined in each space as it is site-specific.

OMAR MADKOUR

Lighting Designer
www.omarmadkour.com
OmarBMadkour@gmail.com
+1 (661) 212-3358



ALL DRAWINGS, DESIGN IDEAS AND PAPERWORK IN THIS PACKET ARE CREATED BY, AND REMAIN PROPERTY OF OMAR MADKOUR. DO NOT PRODUCE, REPLICATE OR ALTER WITHOUT CONSENT. THIS DRAWING DOES NOT REPLACE THE PROFESSIONAL OPINION OF A CERTIFIED ENGINEER. THE DESIGNER IS NOT REQUIRED TO DETERMINE THE STRUCTURAL OR ELECTRICAL APPROPRIATENESS FOR THE VENUE, AND DOES NOT ASSUME RESPONSIBILITY FOR IMPROPER ENGINEERING OR HANDLING. ALL MATERIALS AND CONSTRUCTION MUST COMPLY WITH LOCAL FIRE, SAFETY, & ENERGY CODES.

CALARTS Center for New Performance

*El Camino Donde
Nosotros Lloramos*

CREATED BY Lagartijas Tiradas Al Sol
(Luisa Padro & Gabino Rodriguez)
LIGHTING DESIGNER Omar Madkour
VIDEO DESIGNER Hsuan-Kuang Hsieh

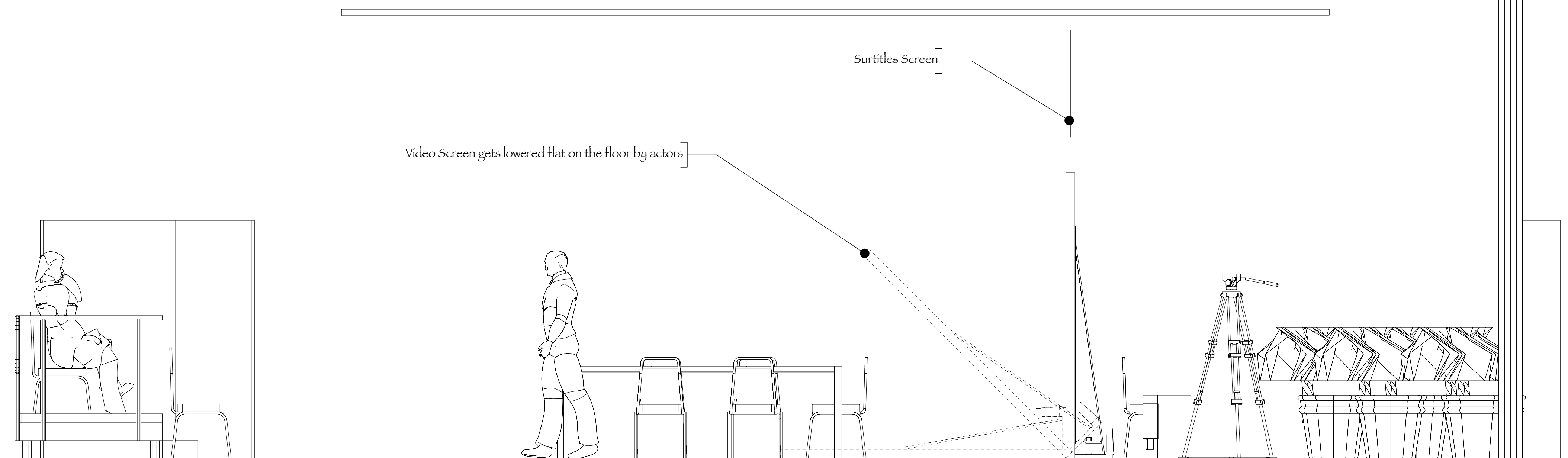
VENUE NON-SPECIFIC

#	BY	REVISION	DATE

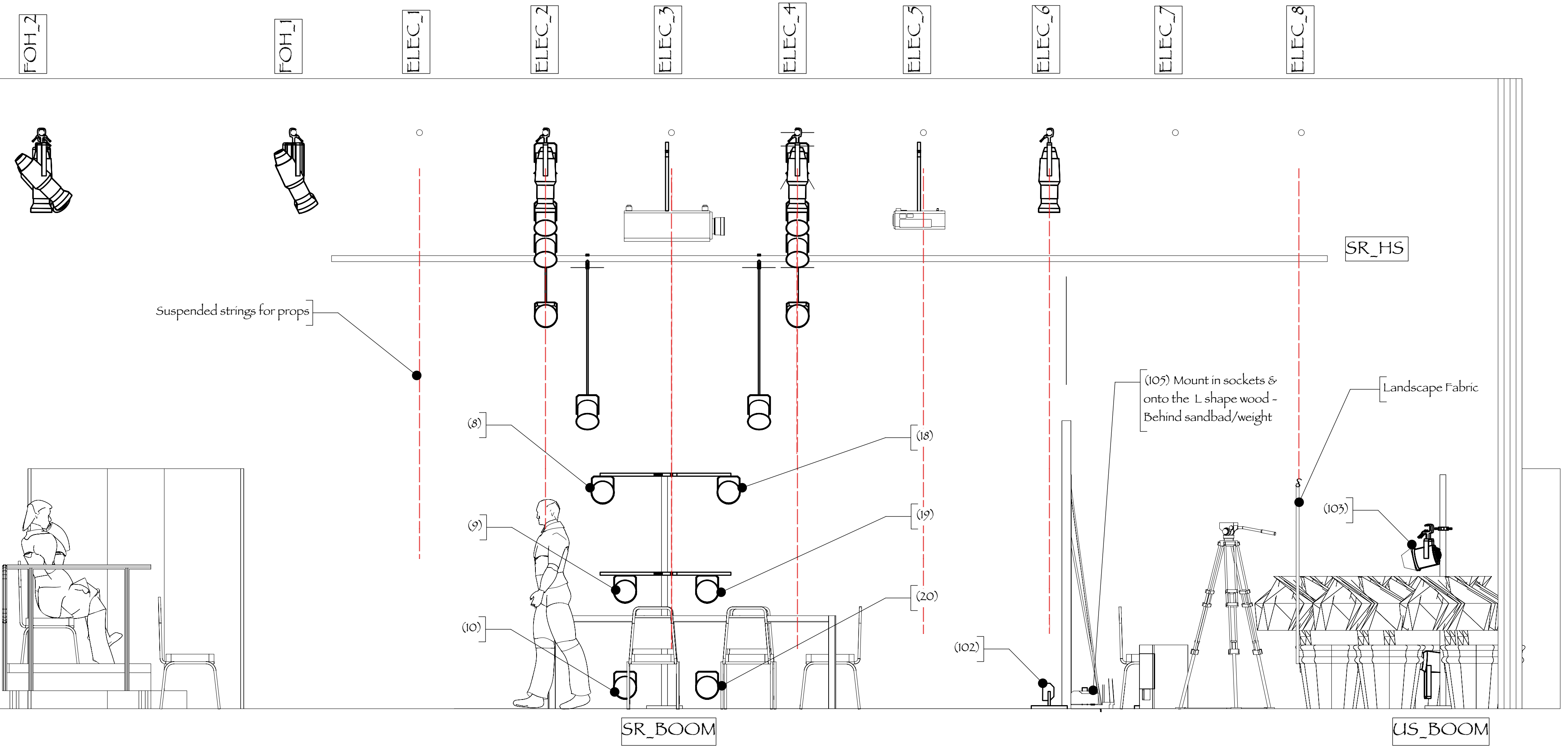
Front Elevation

01/23/2020
DRAFTED BY O.M.
SCALE: 1/2" = 1'-0"
BEST PRINT ON ARCH D

Sht-4
/ 6



1 [SCENIC - Section View]
Sht-5 SCALE: 1/2" = 1'-0"



2 [PLOT - Section View]
Sht-5 SCALE: 1/2" = 1'-0"

KEY TO PLOT

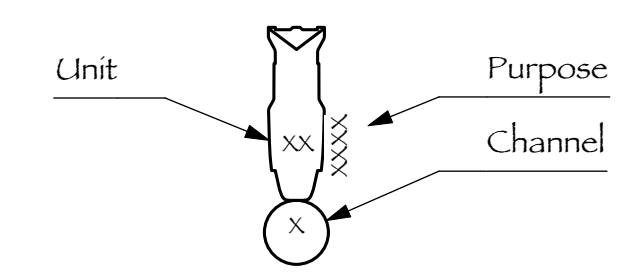
Instrument Key

- Altman 6in Fres @ 750w
- ETC Source4 19° @ 575w
- ETC Source4 36° @ 575w
- ETC Source4 50° @ 575w
- One Cell Halogen Work Light
- LED Flame Bulb, T-60, medium base

Accessory Key

- 7.5in 4 Leaf Barn Door
- 18° sidearm

Legend Key



Sound Key

- Floor Monitor

Rigging Key

- Overhead Rigging Point

Video Key

- Video Projector
- Surtitles Projector

NOTES
 - This is a generic touring packet, unspecific to a venue.
 - Kindly review in tandem with show's tech rider.
 - This sheet is only representative of the idea of the suspended props. Exact location and trim will be determined in each space as it is site-specific.

OMAR MADKOUR
 Lighting Designer
 www.omarmadkour.com
 OmarBMadkour@gmail.com
 +1 (661) 212-3358

ALL DRAWINGS, DESIGN IDEAS AND PAPERWORK IN THIS PACKET ARE CREATED BY, AND REMAIN PROPERTY OF OMAR MADKOUR. DO NOT PRODUCE, REPLICATE OR ALTER WITHOUT CONSENT. THIS DRAWING DOES NOT REPLACE THE PROFESSIONAL OPINION OF A CERTIFIED ENGINEER. THE DESIGNER IS NOT REQUIRED TO DETERMINE THE STRUCTURAL OR ELECTRICAL APPROPRIATENESS FOR THE VENUE, AND DOES NOT ASSUME RESPONSIBILITY FOR IMPROPER ENGINEERING OR HANDLING. ALL MATERIALS AND CONSTRUCTION MUST COMPLY WITH LOCAL FIRE, SAFETY, & ENERGY CODES.

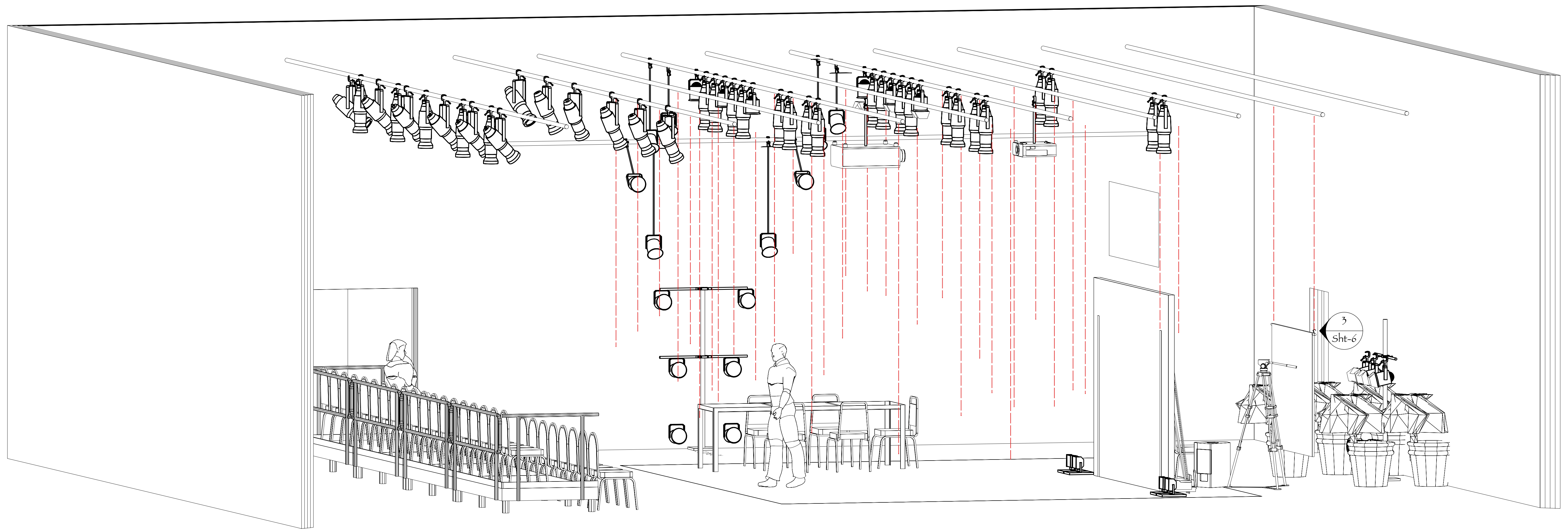
CALARTS Center for New Performance
*El Camino Donde
 Nosotros Lloramos*

CREATED BY Lagartijas Tiradas Al Sol
 (Luisa Padro & Gabino Rodriguez)
 LIGHTING DESIGNER Omar Madkour
 VIDEO DESIGNER Hsuan-Kuang Hsieh

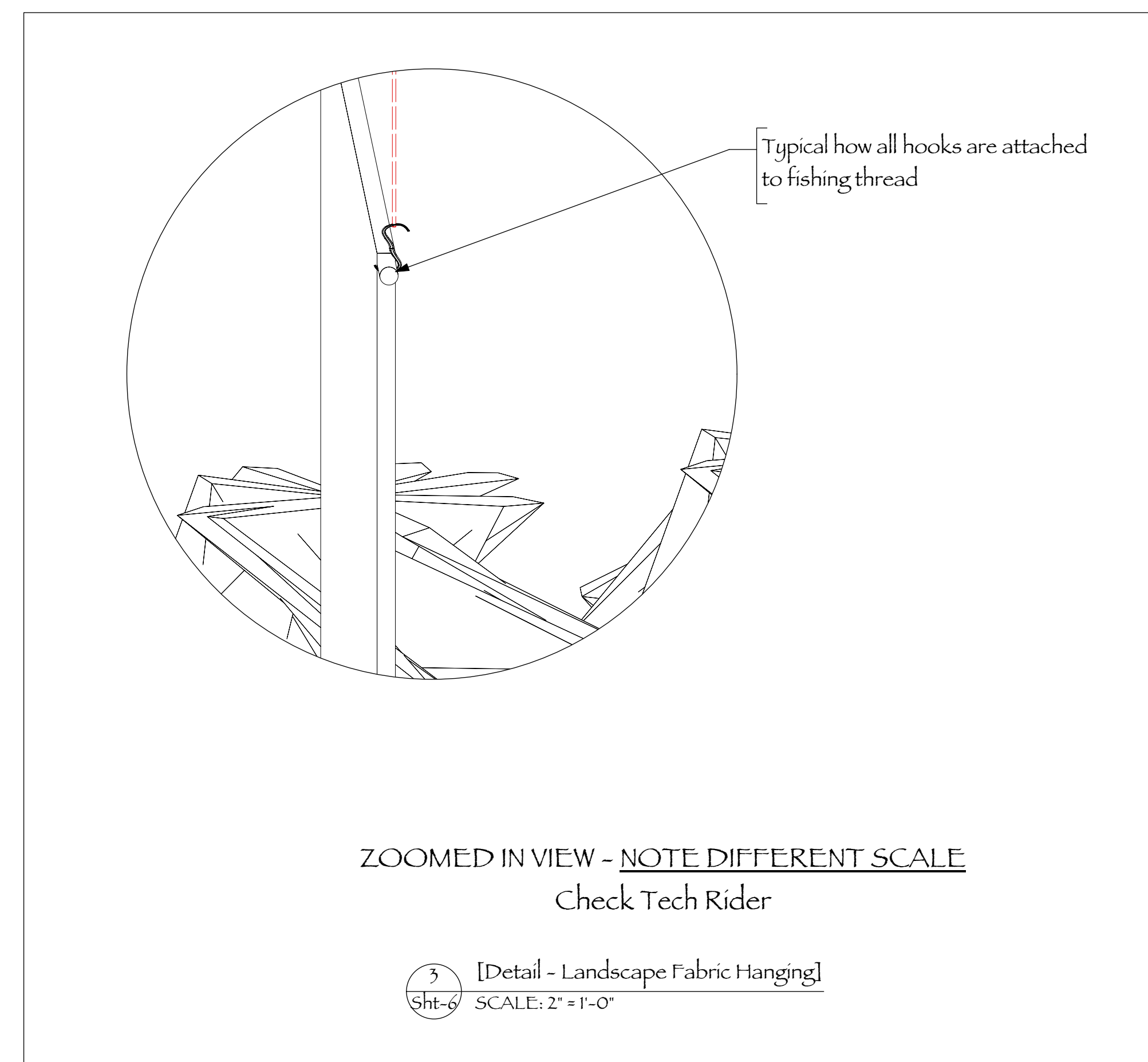
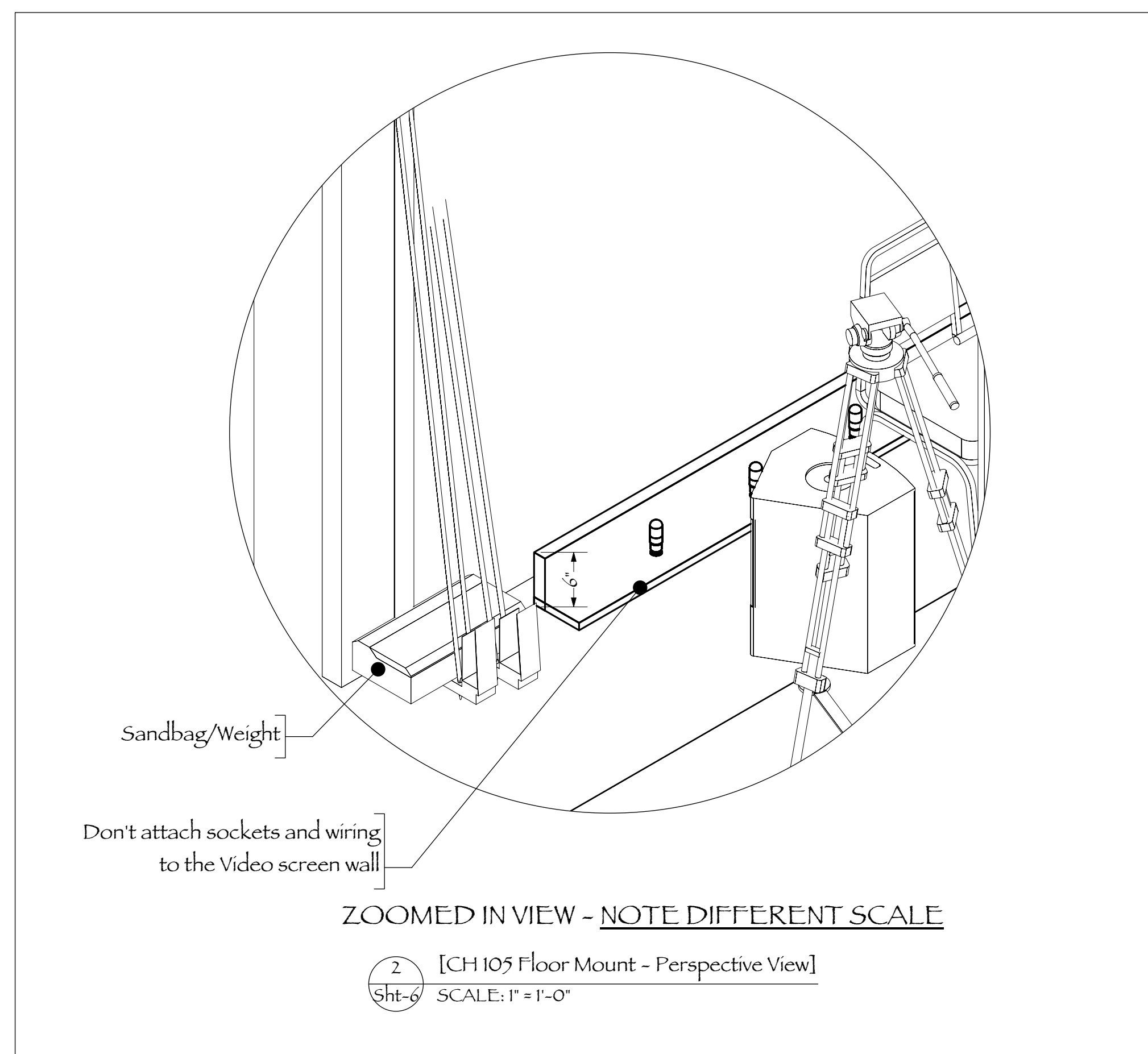
VENUE NON-SPECIFIC			
#	BY	REVISION	DATE

Section
 02/05/2020
 DRAFTED BY O.M.
 SCALE: 1/2" = 1'-0"
 BEST PRINT ON ARCH D

Sht-5 / 6



1 [Perspective View]
Sht-6 SCALE: 1/2" = 1'-0"



OMAR MADKOUR
Lighting Designer
www.omarmadkour.com
OmarBMadkour@gmail.com
+1 (661) 212-3558

ALL DRAWINGS, DESIGN IDEAS AND PAPERWORK IN THIS PACKET ARE CREATED BY, AND REMAIN PROPERTY OF OMAR MADKOUR. DO NOT PRODUCE, REPLICATE OR ALTER WITHOUT CONSENT. THIS DRAWING DOES NOT REPLACE THE PROFESSIONAL OPINION OF A CERTIFIED ENGINEER. THE DESIGNER IS NOT REQUIRED TO DETERMINE THE STRUCTURAL OR ELECTRICAL APPROPRIATENESS FOR THE VENUE, AND DOES NOT ASSUME RESPONSIBILITY FOR IMPROPER ENGINEERING OR HANDLING. ALL MATERIALS AND CONSTRUCTION MUST COMPLY WITH LOCAL FIRE, SAFETY, & ENERGY CODES.



OMAR MADKOUR
LIGHTING DESIGN

CALARTS Center for New Performance
*El Camino Donde
Nosotros Lloramos*

CREATED BY Lagartijas Tiradas Al Sol
(Luisa Padro & Gabino Rodriguez)
LIGHTING DESIGNER Omar Madkour
VIDEO DESIGNER Hsuan-Kuang Hsieh

VENUE NON-SPECIFIC			
#	BY	REVISION	DATE

Detail Views
02/06/2020
DRAFTED BY O.M.
SCALE: 1/2" = 1'-0"
BEST PRINT ON ARCH D

Sht-6
/ 6