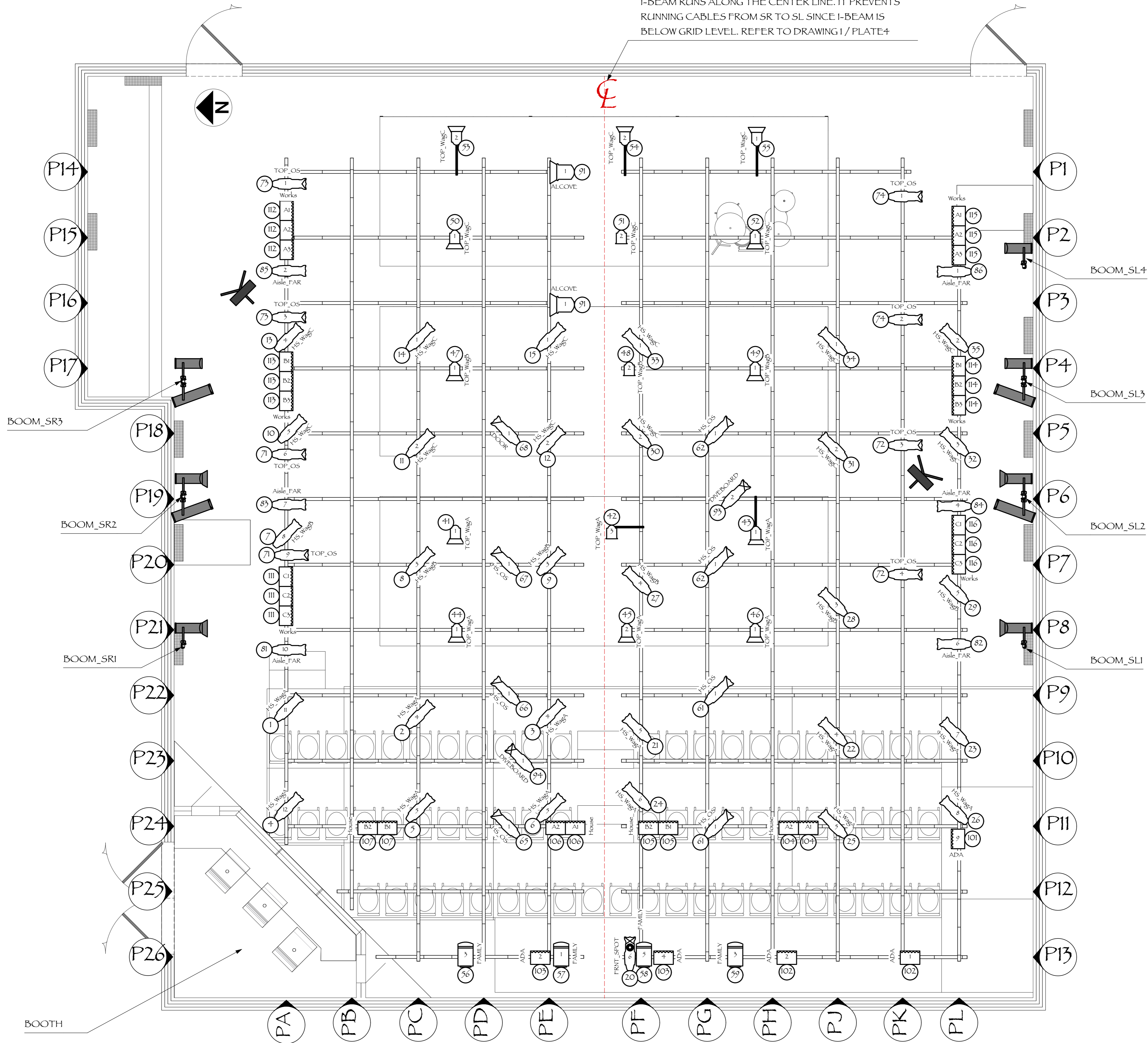
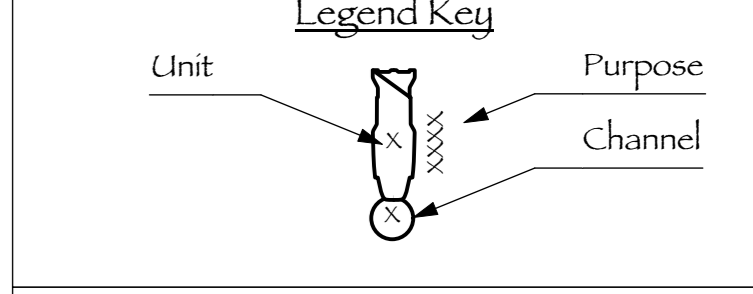


I-BEAM RUNS ALONG THE CENTER LINE. IT PREVENTS RUNNING CABLES FROM SR TO SL SINCE I-BEAM IS BELOW GRID LEVEL. REFER TO DRAWING 1 / PLATE 4



- Instrument Key**
- Altman 6° Fresnel @ 750W
 - Altman 8° Fresnel @ 1KW
 - ETC S4 - 19° @ 575W
 - ETC S4 - 26° @ 575W
 - ETC S4 - 36° @ 575W
 - Selecon PL Fresnel 1 LED @ 150W
 - Selecon PL Profile 18°-34° @ 150W
 - Selecon PL-3 LED @ 360W
 - Altman SKY-CYC-01 @ 1KW
 - Altman SKY-CYC-02H @ 2X1KW
 - Altman SKY-CYC-03 @ 3X1KW
 - Altman Zip Strip WFL @ 3X750W
 - Platform Fixture (A19 Bulbs)
 - Music Stand Light
 - Radiance Hazer @ 675W
 - Blue CFL Bulb @ 10W

- Accessory Key**
- 7.5in 4 Leaf Barn Door
 - 10in 4 Leaf Barn Door
 - 7.5in Half Top Hat
 - 18" Side Arm
 - Autoiris



NOTES

- Tick mark spacing at 18"
- Accessories, Gels & Gobos as indicated in the Lightwright package please
- Does anyone actually read these notes?

OMAR MADKOUR
 Lighting Designer
 www.omarmadkour.com
 omarmadkour@alum.calarts.edu
 +1 (640) 219-3538

Omar Madkour
 LIGHTING DESIGNER

CALARTS School of Theatre Presents
BLACK LIKE ME

DIRECTOR & PLAYWRIGHT Monty Cole
 SCENIC DESIGNER Salmah Beydoun
 LIGHTING DESIGNER Omar Madkour
 ASST. LIGHTING DESIGNER Ry Burke
 MASTER ELECTRICIAN Jake Jolley

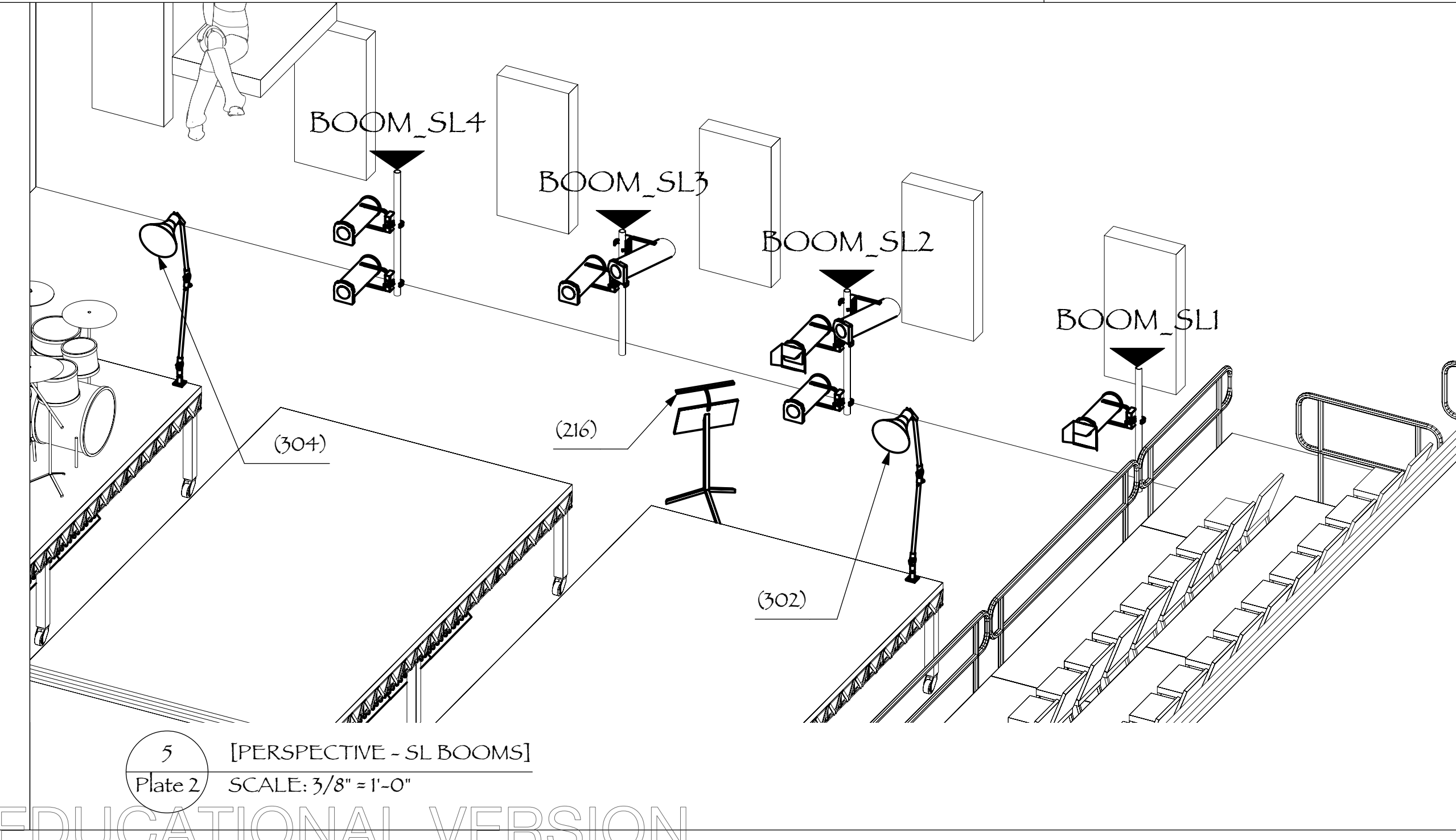
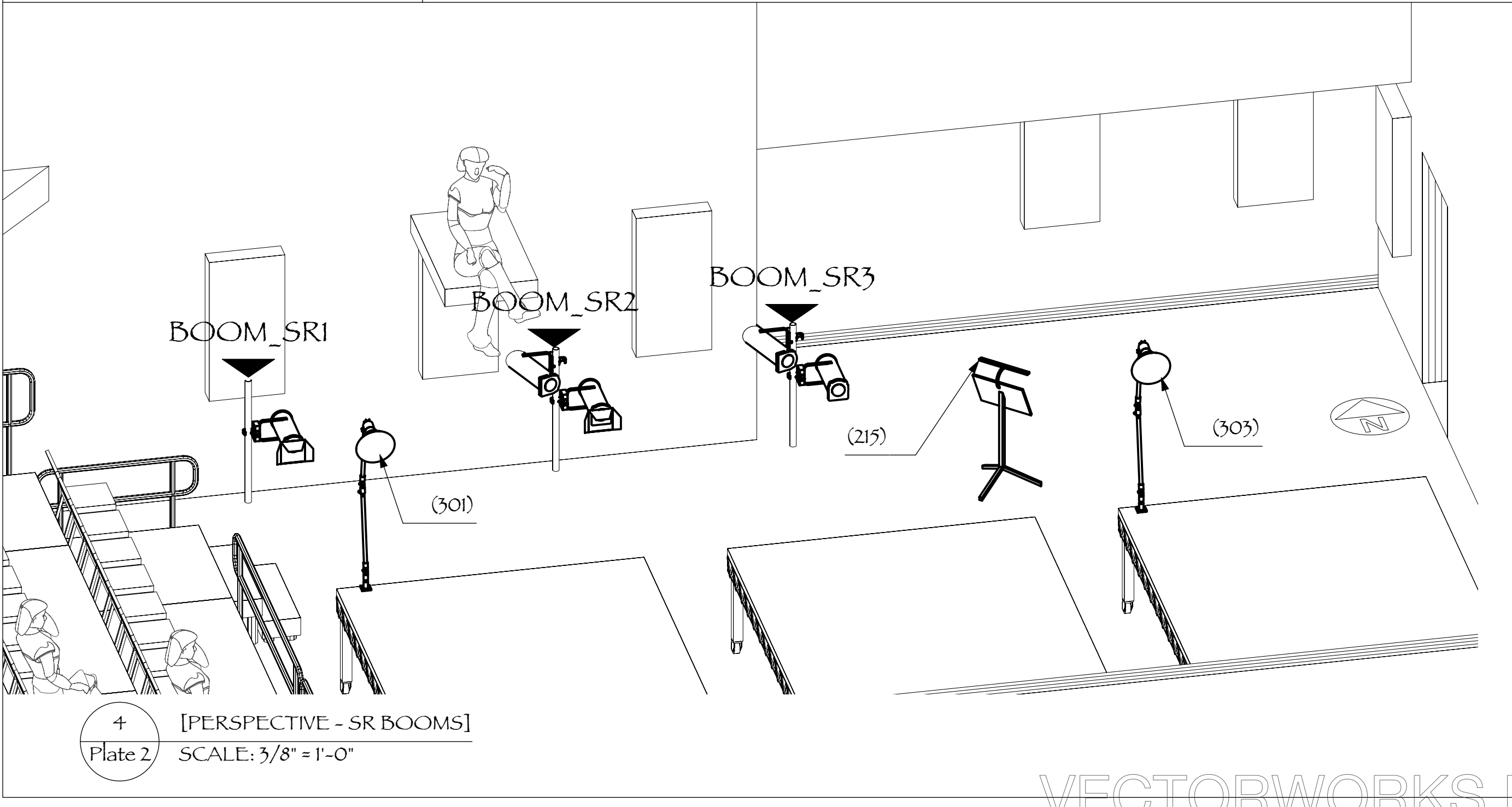
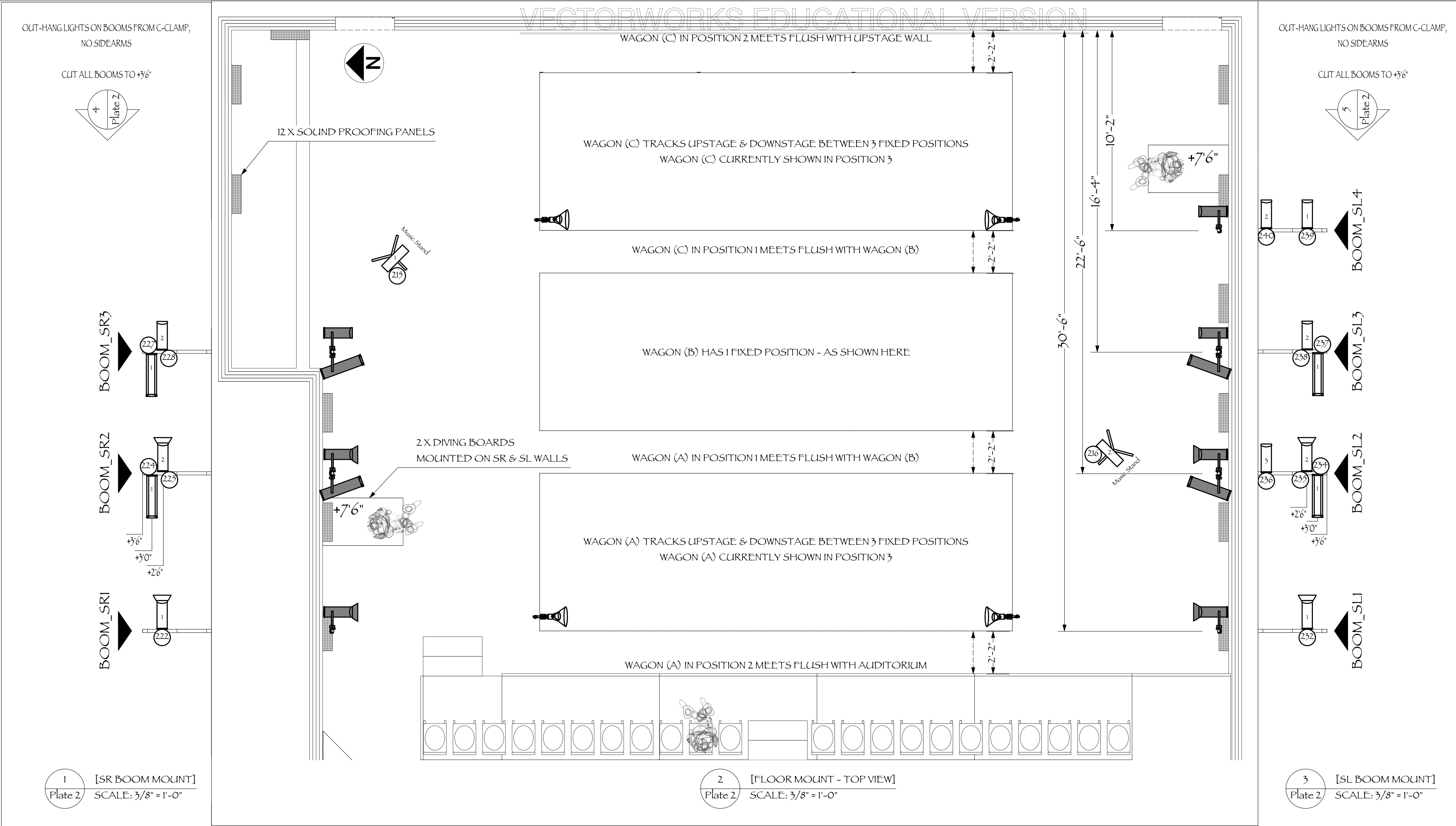
CalArts, E-400
 24700 McBean Pkwy,
 Santa Clarita, CA, 91355

#	BY	REVISION	DATE
E	O.M.	Tech notes updated	4/18/19
D	O.M.	Focus notes updated	4/1/19
C	O.M.	Load In notes updated	3/21/19

Light Plot - Overhead
 05/01/2020
 DRAFTED BY O.M.
 SCALE 3/8" = 1'-0"
 BEST PRINT ON ARCH D

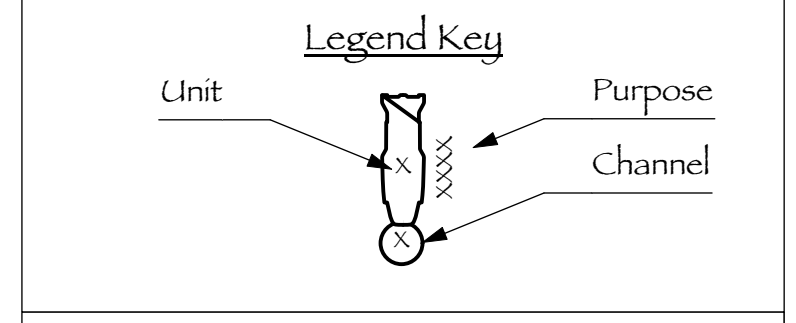
Plate 1
 / 4

1 [OVERHEAD]
 Plate 1 SCALE: 3/8" = 1'-0"



- Instrument Key**
- Altman 6" Fresnel @ 750W
 - Altman 8" Fresnel @ 1KW
 - ETC S4 - 19° @ 575W
 - ETC S4 - 26° @ 575W
 - ETC S4 - 36° @ 575W
 - Selecon PLFresnel 1 LED @ 150W
 - Selecon PLProfile 18°-34° @ 150W
 - Selecon PL-3 LED @ 360W
 - Altman SKY-CYC-01 @ 1KW
 - Altman SKY-CYC-02H @ 2X1KW
 - Altman SKY-CYC-05 @ 3X1KW
 - Altman Zip Strip WFL @ 3X750W
 - Platform Fixture (A19 Bulbs)
 - Music Stand Light
 - Radiance Hazer @ 675W
 - Blue CFL Bulb @ 10W

- Accessory Key**
- 7.5in 4 Leaf Barn Door
 - 10in 4 Leaf Barn Door
 - 7.5in Half Top Hat
 - 18" Side Arm
 - Autoiris



NOTES

- Tick mark spacing at 18"
- Accessories, Gels & Gobos as indicated in the Lightwright package please
- Does anyone actually read these notes?

OMAR MADKOUR
Lighting Designer
www.omarmadkour.com
omarmadkour@alum.calarts.edu
+1 (661) 212-3558

OMAR MADKOUR
LIGHTING DESIGN

ALL DRAWINGS, DESIGN IDEAS AND PAPERWORK IN THIS PACKET ARE CREATED BY, AND REMAIN PROPERTY OF OMAR MADKOUR. DO NOT PRODUCE, REPLICATE OR ALTER WITHOUT CONSENT. THIS DRAWING DOES NOT REPLACE THE PROFESSIONAL OPINION OF A CERTIFIED ENGINEER. THE DESIGNER IS NOT REQUIRED TO DETERMINE THE STRUCTURAL OR ELECTRICAL APPROPRIATENESS FOR THE VENUE, AND DOES NOT ASSUME RESPONSIBILITY FOR IMPROPER ENGINEERING OR HANDLING. ALL MATERIALS AND CONSTRUCTION MUST COMPLY WITH LOCAL FIRE, SAFETY, & ENERGY CODES.

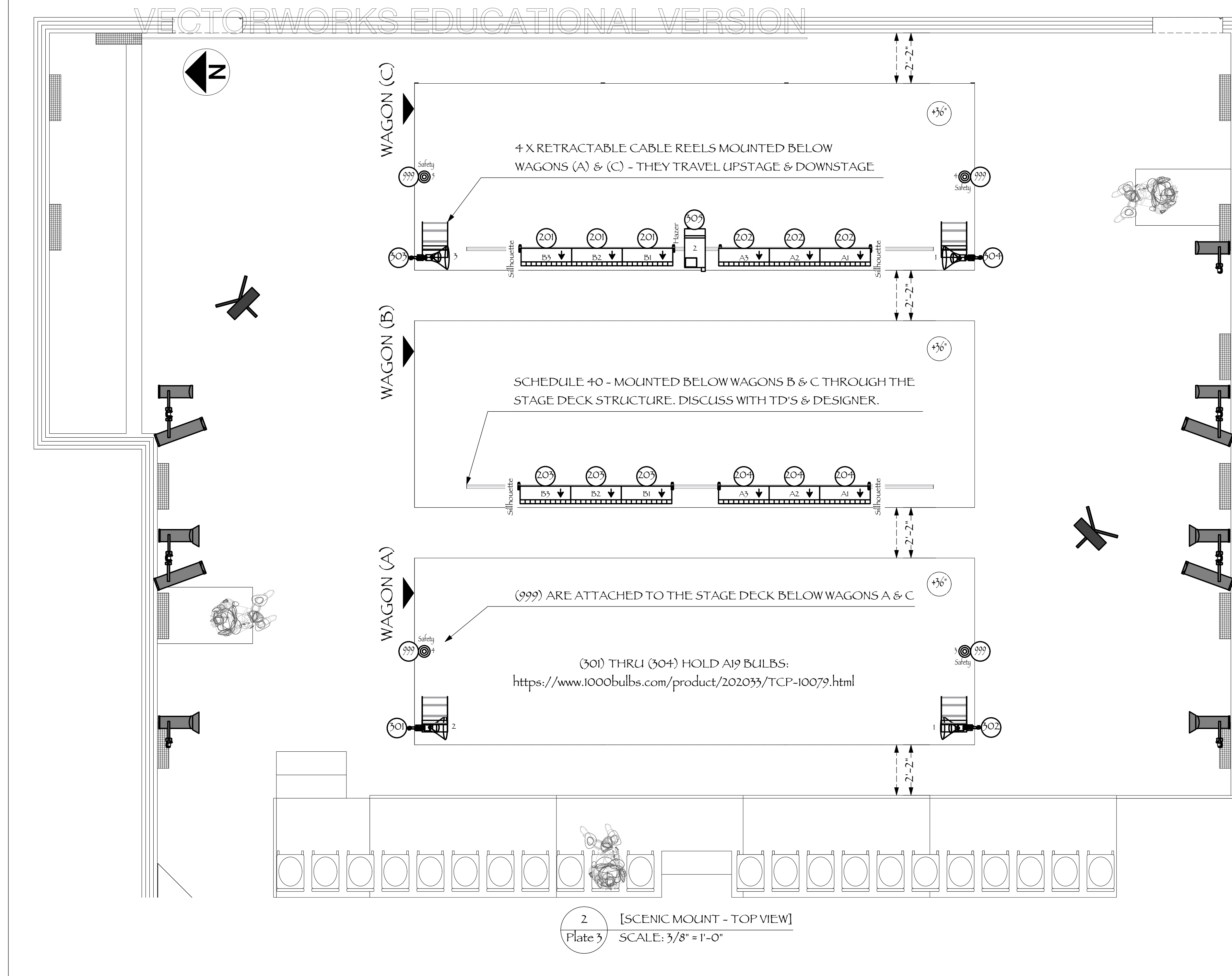
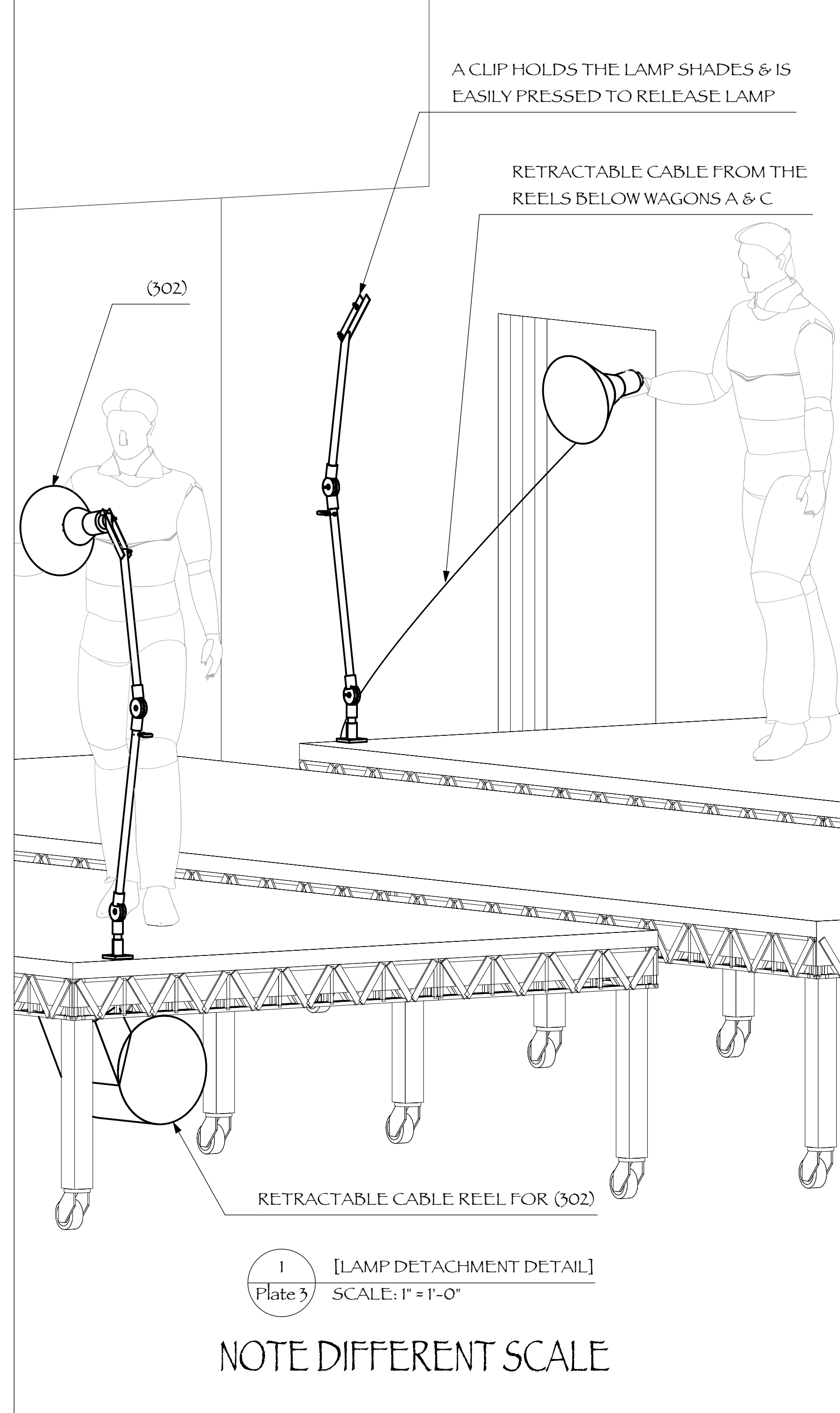
CalArts School of Theatre Presents
BLACK LIKE ME

DIRECTOR & PLAYWRIGHT Monty Cole
SCENIC DESIGNER Salmah Beydoun
LIGHTING DESIGNER Omar Madkour
ASST. LIGHTING DESIGNER Ry Burke
MASTER ELECTRICIAN Jake Jolley

#	BY	REVISION	DATE
E	O.M.	Tech notes updated	4/18/19
D	O.M.	Focus notes updated	4/1/19
C	O.M.	Load In notes updated	3/21/19

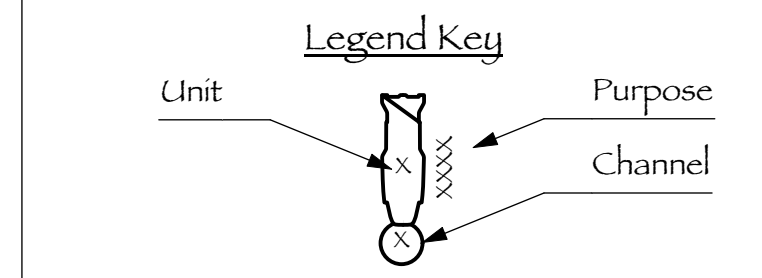
Light Plot - Floor Mount
05/01/2020
DRAFTED BY O.M.
SCALE 3/8" = 1'-0"
BEST PRINT ON ARCH D

Plate 2 / 4



- Instrument Key**
- Altman 6' Fresnel @ 750W
 - Altman 8' Fresnel @ 1KW
 - ETC S4 - 19° @ 575W
 - ETC S4 - 26° @ 575W
 - ETC S4 - 36° @ 575W
 - Selecon PL Fresnel 1 LED @ 150W
 - Selecon PL Profile 18°-34° @ 150W
 - Selecon PL 3 LED @ 360W
 - Altman SKY-CYC-01 @ 1KW
 - Altman SKY-CYC-02H @ 2X1KW
 - Altman SKY-CYC-05 @ 3X1KW
 - Altman Zip Strip WFL @ 3X750W
 - Platform Fixture (A19 Bulbs)
 - Music Stand Light
 - Radiance Hazer @ 675W
 - Blue CFL Bulb @ 10W

- Accessory Key**
- 7.5in 4 Leaf Barn Door
 - 10in 4 Leaf Barn Door
 - 7.5in Half Top Hat
 - 18 Side Arm
 - Autoiris



NOTES

- Tick mark spacing at 18"
- Accessories, Gels & Gobos as indicated in the Lightwright package please
- Does anyone actually read these notes?

OMAR MADKOUR
Lighting Designer
www.omarmadkour.com
omarmadkour@alum.calarts.edu
+1 (661) 212-3558

ALL DRAWINGS, DESIGN IDEAS AND PAPERWORK IN THIS PACKET ARE CREATED BY, AND REMAIN PROPERTY OF OMAR MADKOUR. DO NOT PRODUCE, REPLICATE OR ALTER WITHOUT CONSENT. THIS DRAWING DOES NOT REPLACE THE PROFESSIONAL OPINION OF A CERTIFIED ENGINEER. THE DESIGNER IS NOT REQUIRED TO DETERMINE THE STRUCTURAL OR ELECTRICAL APPROPRIATENESS FOR THE VENUE, AND DOES NOT ASSUME RESPONSIBILITY FOR IMPROPER ENGINEERING OR WARELING. ALL MATERIALS AND CONSTRUCTION MUST COMPLY WITH LOCAL FIRE, SAFETY, & ENERGY CODES.

CalArts School of Theatre Presents
BLACK LIKE ME

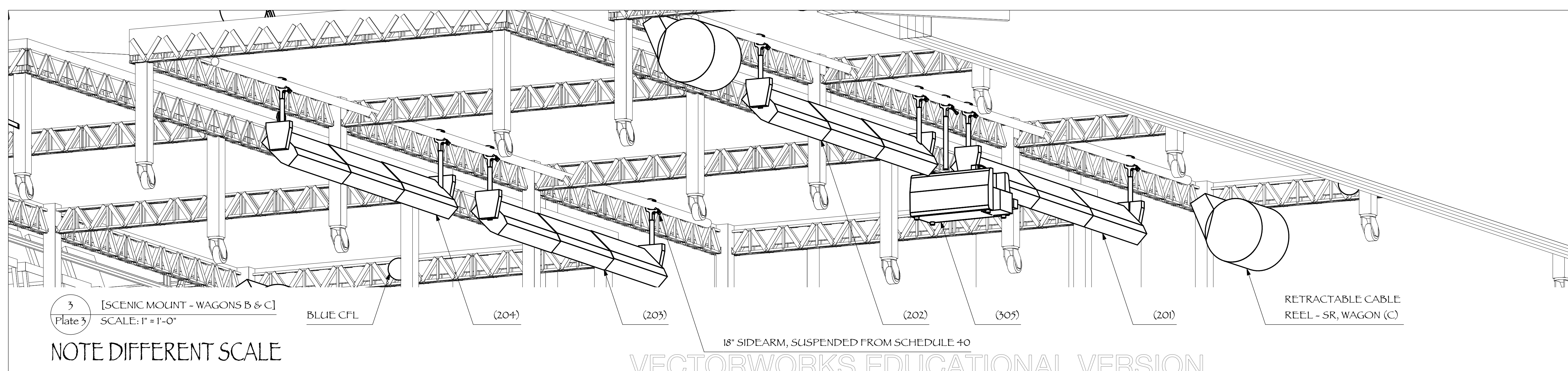
DIRECTOR & PLAYWRIGHT: Monty Cole
SCENIC DESIGNER: Salmah Beydoun
LIGHTING DESIGNER: Omar Madkour
ASST. LIGHTING DESIGNER: Ry Burke
MASTER ELECTRICIAN: Jake Jolley

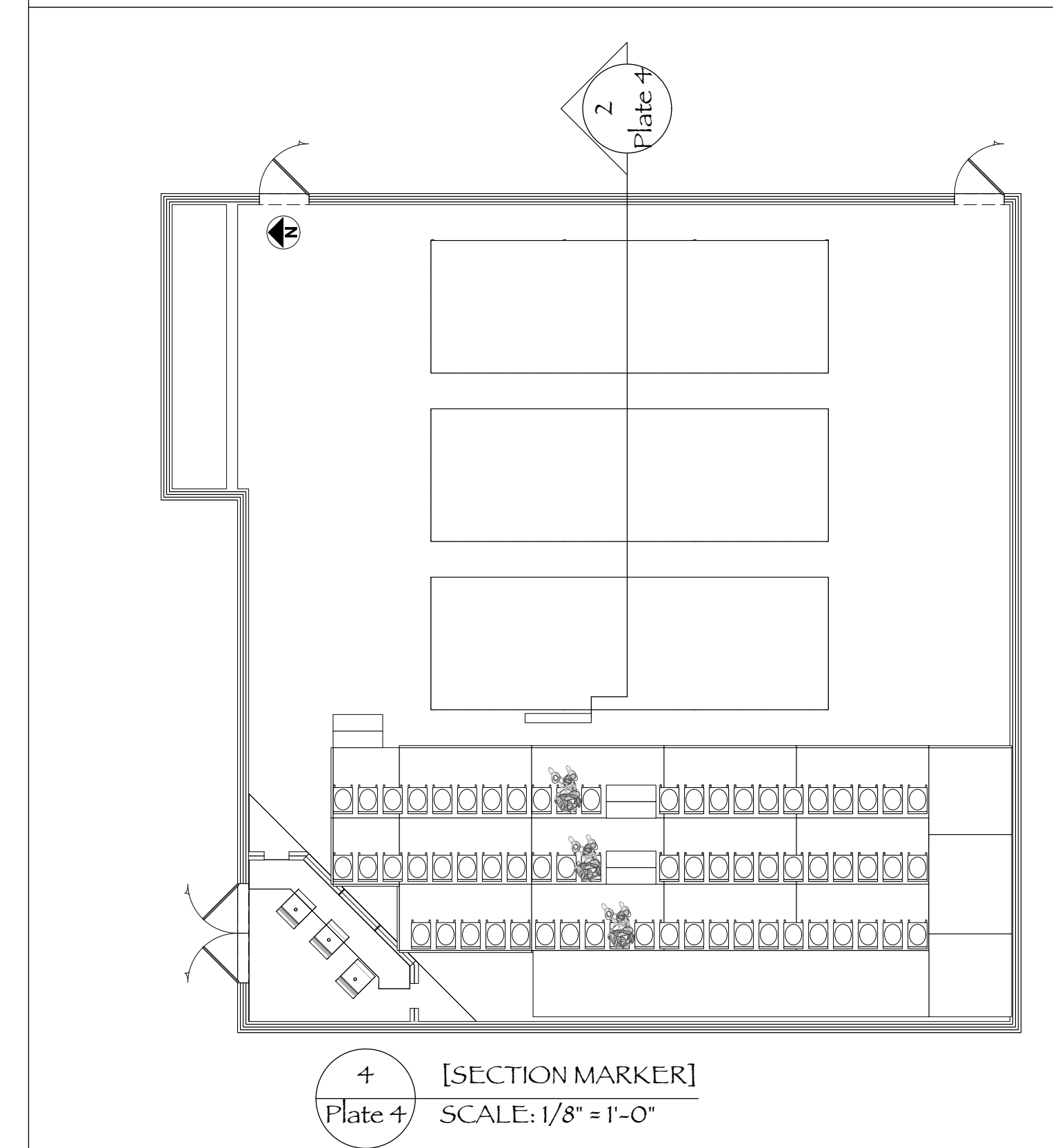
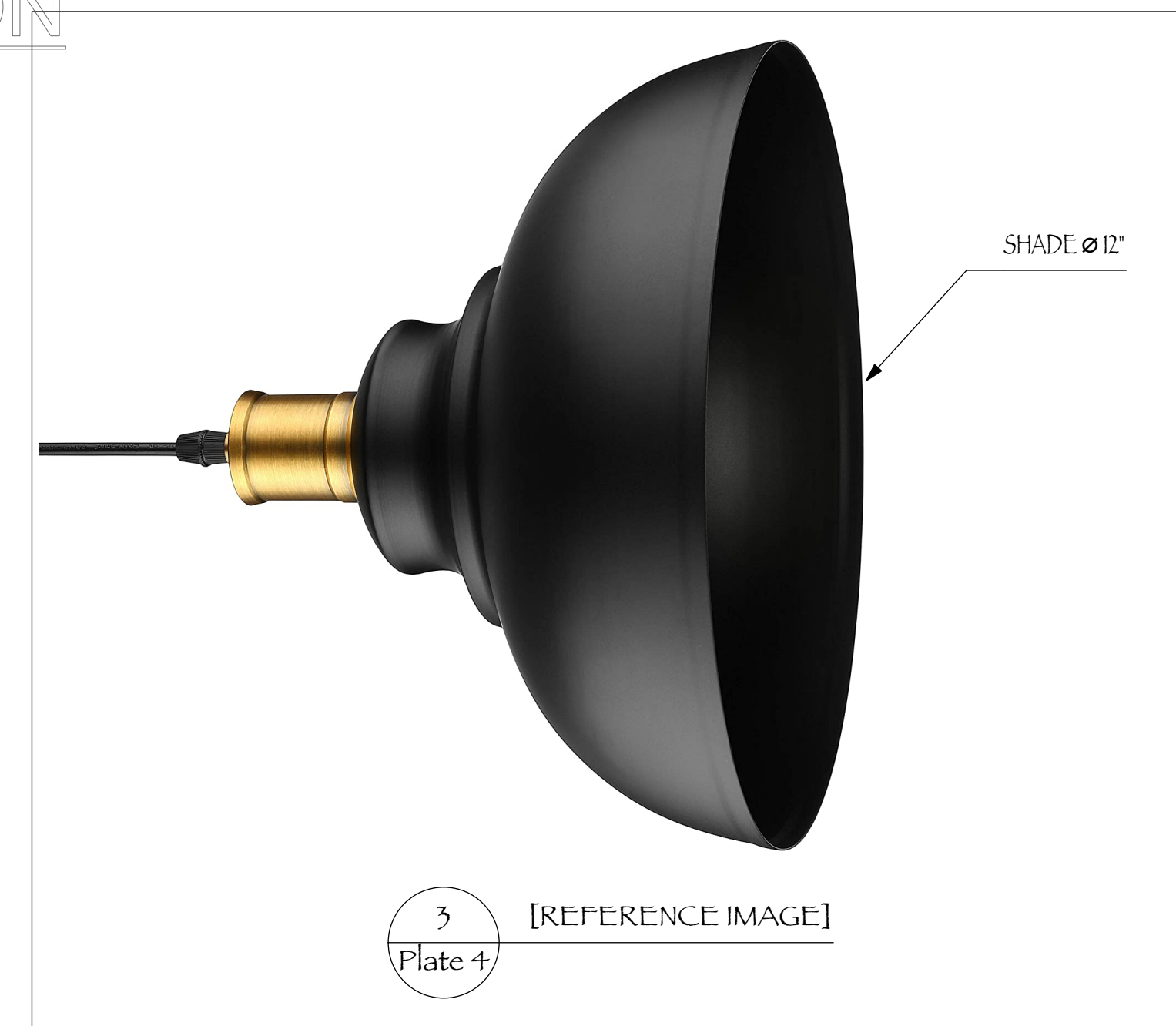
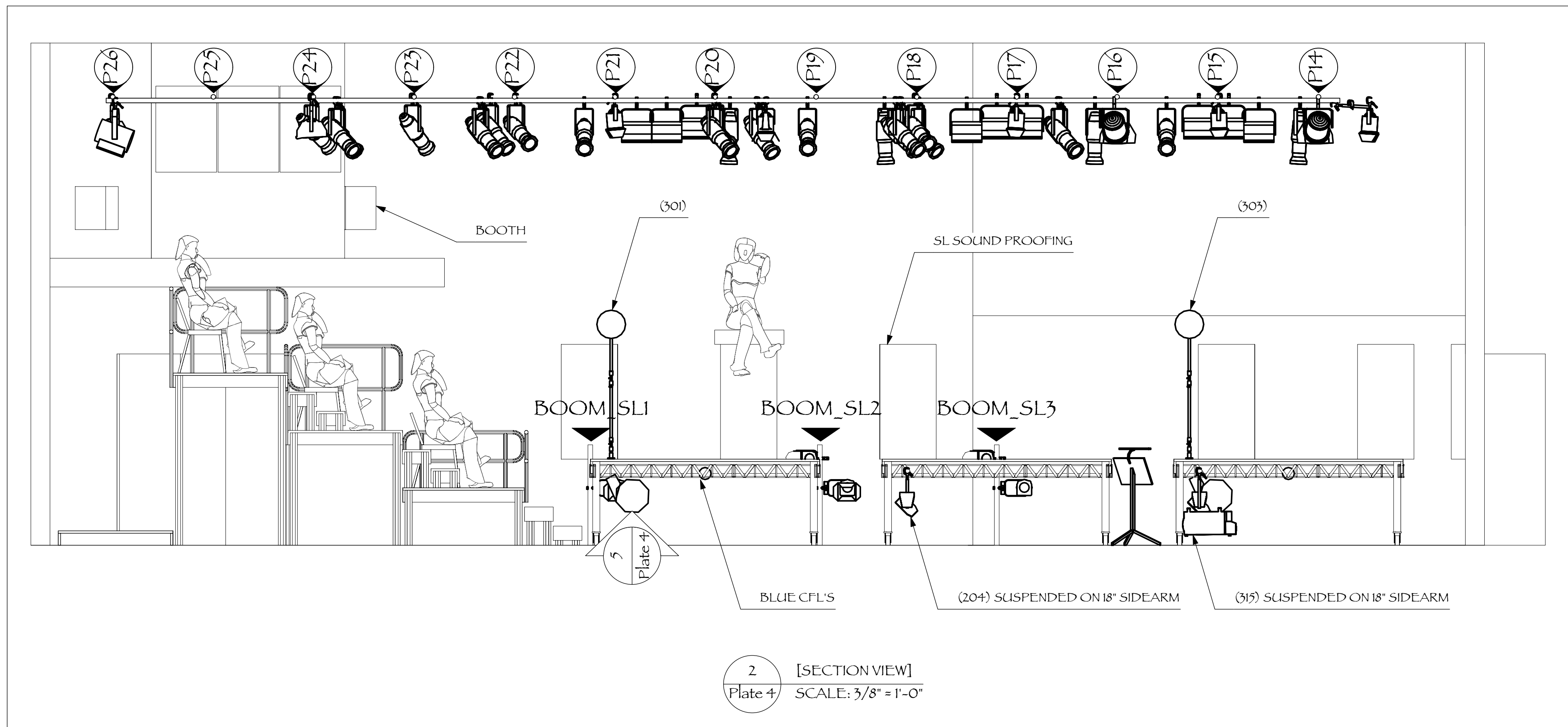
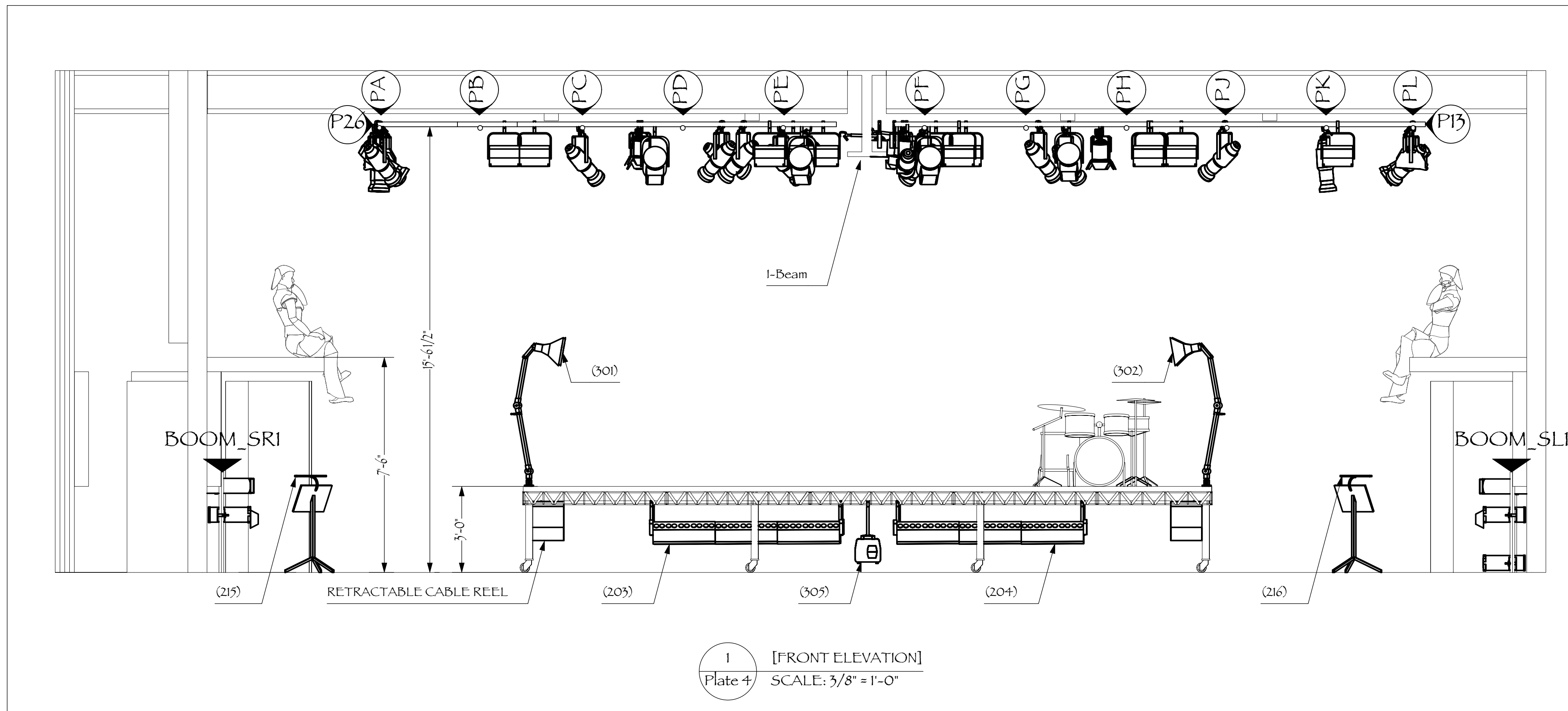
CalArts, E-400
24700 McBean Pkwy,
Santa Clarita, CA, 91355

#	BY	REVISION	DATE
E	O.M.	Tech notes updated	4/18/19
D	O.M.	Focus notes updated	4/1/19
C	O.M.	Load in notes updated	3/21/19

Light Plot - Scenic Mount
05/01/2020
DRAFTED BY O.M.
SCALE - VARIABLE
BEST PRINT ON ARCH D

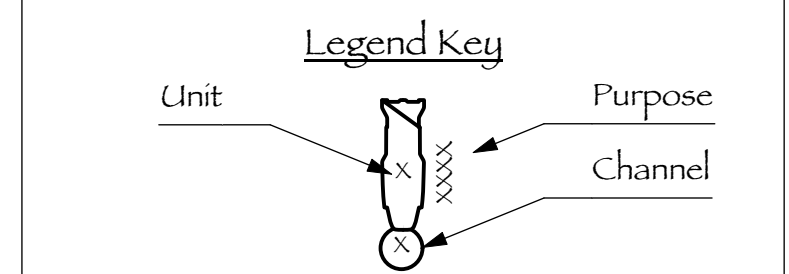
Plate 3 / 4





- Instrument Key**
- Altman 6" Fresnel @ 750W
 - Altman 8" Fresnel @ 1KW
 - ETC S4 - 19° @ 575W
 - ETC S4 - 26° @ 575W
 - ETC S4 - 36° @ 575W
 - Selecon PL Fresnel 1 LED @ 150W
 - Selecon PL Profile 18°-34° @ 150W
 - Selecon PL-3 LED @ 360W
 - Altman SKY-CYC-01 @ 1KW
 - Altman SKY-CYC-02H @ 2X1KW
 - Altman SKY-CYC-05 @ 3X1KW
 - Altman Zip Strip WFL @ 3X750W
 - Platform Fixture (A19 Bulbs)
 - Music Stand Light
 - Radiance Hazer @ 675W
 - Blue CFL Bulb @ 10W

- Accessory Key**
- 7.5in Leaf Barn Door
 - 10in Leaf Barn Door
 - 7.5in Half Top Hat
 - 18" Side Arm
 - Autoiris



NOTES

- Tick mark spacing at 18"
- Accessories, Gels & Gobos as indicated in the Lightwright package please
- Does anyone actually read these notes?

OMAR MADKOUR
Lighting Designer
www.omarmadkour.com
omarmadkour@alum.calarts.edu
+1 (661) 212-3558

M
OMAR MADKOUR
LIGHTING DESIGN

ALL DRAWINGS, DESIGN IDEAS AND PAPERWORK IN THIS PACKET ARE CREATED BY AND REMAIN PROPERTY OF OMAR MADKOUR. DO NOT PRODUCE, REPLICATE OR ALTER WITHOUT CONSENT. THIS DRAWING DOES NOT REPLACE THE PROFESSIONAL OPINION OF A CERTIFIED ENGINEER. THE DESIGNER IS NOT REQUIRED TO DETERMINE THE STRUCTURAL OR ELECTRICAL APPROPRIATENESS FOR THE VENUE, AND DOES NOT ASSUME RESPONSIBILITY FOR IMPROPER ENGINEERING OR HANDLING. ALL MATERIALS AND CONSTRUCTION MUST COMPLY WITH LOCAL FIRE, SAFETY, & ENERGY CODES.

CalArts School of Theatre Presents
BLACK LIKE ME

DIRECTOR & PLAYWRIGHT: Monty Cole
SCENIC DESIGNER: Salmah Beydoun
LIGHTING DESIGNER: Omar Madkour
ASST. LIGHTING DESIGNER: Ry Burke
MASTER ELECTRICIAN: Jake Jolley

CalArts, E-400
24700 McBean Pkwy,
Santa Clarita, CA, 91355

#	BY	REVISION	DATE
E	O.M.	Tech notes updated	4/18/19
D	O.M.	Focus notes updated	4/1/19
C	O.M.	Load In notes updated	3/21/19

Section & Front
05/01/2020
DRAFTED BY O.M.
SCALE 3/8" = 10"
BEST PRINT ON ARCH D

Plate 4
/ 4